

Recombinant Mouse INS1 Protein (25-108 aa), His-Myc-tagged

Cat. No. INS1-2164M Lot. No. (See product label)

SPECIFICATION

Product Overview	Recombinant Mouse INS1 Protein (25-108 aa) is produced by Yeast expression system. This protein is fused with a 6xHis tag at the N-terminal and a Myc tag at the C-terminal. Protein Description: Full Length of Mature Protein.
Species	Mouse
Source	Yeast
ProteinLength	25-108 aa
Description	Insulin decreases blood glucose concentration. It increases cell permeability to monosaccharides, amino acids and fatty acids. It accelerates glycolysis, the pentose phosphate cycle, and glycogen synthesis in liver.
Form	Tris-based buffer,50% glycerol
Molecular Mass	13.0 kDa
AA Sequence	FVKQHLGCPHLVEALYLVCGERGFFYTPKSRREVEDPQVEQLELGGSPGDLQTLAL EVARQKRGIVDQCCTSICSLYQLENYCN
Purity	> 90% as determined by SDS-PAGE.
Notes	Repeated freezing and thawing is not recommended. Store working aliquots at 4 centigrade for up to one week.

 Tel: 1-631-559-9269 1-516-512-3133

 Email: info@creative-biomart.com  Fax: 1-631-938-8127

 45-1 Ramsey Road, Shirley, NY 11967, USA

Storage

The shelf life is related to many factors, storage state, buffer ingredients, storage temperature and the stability of the protein itself. Generally, the shelf life of liquid form is 6 months at -20 centigrade/-80 centigrade. The shelf life of lyophilized form is 12 months at -20 centigrade/-80 centigrade.

Concentration

A hardcopy of COA will be sent along with the products. Please refer to it for detailed information.

GENE INFORMATION

Gene Name

[Ins1 insulin I \[Mus musculus \]](#)

Official Symbol

[INS1](#)

Synonyms

INS1; insulin I; insulin-1; Ins-1; Ins2-rs1;

Gene ID

[16333](#)

mRNA Refseq

[NM_008386](#)

Protein Refseq

[NP_032412](#)

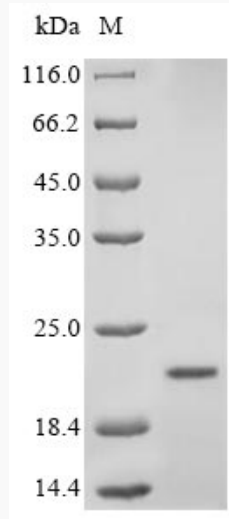
UniProt ID

[P01325](#)

 Tel: 1-631-559-9269 1-516-512-3133

 Email: info@creative-biomart.com  Fax: 1-631-938-8127

 45-1 Ramsey Road, Shirley, NY 11967, USA



(Tris-Glycine gel) Discontinuous SDS-PAGE (reduced) with 5% enrichment gel and 15% separation gel.

Tel: 1-631-559-9269 1-516-512-3133

Email: info@creative-biomart.com Fax: 1-631-938-8127

45-1 Ramsey Road, Shirley, NY 11967, USA