

## Recombinant Mouse INS1 Protein (25-108 aa), His-Myc-tagged

Cat. No. INS1-2256M Lot. No. (See product label)

### SPECIFICATION

<b>Product Overview</b>	Recombinant Mouse INS1 Protein (25-108 aa) is produced by E. coli expression system. This protein is fused with a 10xHis tag at the N-terminal and a Myc tag at the C-terminal. Protein Description: Full Length of Mature Protein.
<b>Species</b>	Mouse
<b>Source</b>	E.coli
<b>ProteinLength</b>	25-108 aa
<b>Description</b>	Insulin decreases blood glucose concentration. It increases cell permeability to monosaccharides, amino acids and fatty acids. It accelerates glycolysis, the pentose phosphate cycle, and glycogen synthesis in liver.
<b>Form</b>	Tris-based buffer,50% glycerol
<b>Molecular Mass</b>	14.5 kDa
<b>AA Sequence</b>	FVKQHLGPHLVEALYLVCGERGFFYTPKSRREVEDPQVEQLELGGSPGDLQTLAL EVARQKRGIVDQCCTSICSLYQLENYCN
<b>Purity</b>	> 90% as determined by SDS-PAGE.
<b>Notes</b>	Repeated freezing and thawing is not recommended. Store working aliquots at 4 centigrade for up to one week.

 Tel: 1-631-559-9269 1-516-512-3133

 Email: [info@creative-biomart.com](mailto:info@creative-biomart.com)  Fax: 1-631-938-8127

 45-1 Ramsey Road, Shirley, NY 11967, USA

**Storage**

The shelf life is related to many factors, storage state, buffer ingredients, storage temperature and the stability of the protein itself. Generally, the shelf life of liquid form is 6 months at -20 centigrade/-80 centigrade. The shelf life of lyophilized form is 12 months at -20 centigrade/-80 centigrade.

**Concentration**

A hardcopy of COA will be sent along with the products. Please refer to it for detailed information.

## GENE INFORMATION

**Gene Name**

[Ins1 insulin I \[ Mus musculus \]](#)

**Official Symbol**

[INS1](#)

**Synonyms**

[INS1](#); [insulin I](#); [insulin-1](#); [Ins-1](#); [Ins2-rs1](#);

**Gene ID**

[16333](#)

**mRNA Refseq**

[NM\\_008386](#)

**Protein Refseq**

[NP\\_032412](#)

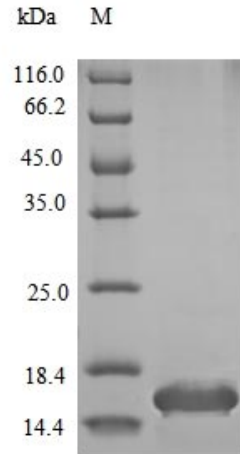
**UniProt ID**

[P01325](#)

 Tel: 1-631-559-9269 1-516-512-3133

 Email: [info@creative-biomart.com](mailto:info@creative-biomart.com)  Fax: 1-631-938-8127

 45-1 Ramsey Road, Shirley, NY 11967, USA



(Tris-Glycine gel) Discontinuous SDS-PAGE (reduced) with 5% enrichment gel and 15% separation gel.

 Tel: 1-631-559-9269 1-516-512-3133

 Email: [info@creative-biomart.com](mailto:info@creative-biomart.com)  Fax: 1-631-938-8127

 45-1 Ramsey Road, Shirley, NY 11967, USA