

Recombinant Rat INS1 Protein (25-54 aa), His-SUMO-tagged

Cat. No. INS1-2436R Lot. No. (See product label)

SPECIFICATION

Product Overview	Recombinant Rat INS1 Protein (25-54 aa) is produced by E. coli expression system. This protein is fused with a 6xHis-SUMO tag at the N-terminal. Protein Description: Partial.
Species	Rat
Source	E.coli
ProteinLength	25-54 aa
Description	Insulin decreases blood glucose concentration. It increases cell permeability to monosaccharides, amino acids and fatty acids. It accelerates glycolysis, the pentose phosphate cycle, and glycogen synthesis in liver.
Form	Tris-based buffer,50% glycerol
Molecular Mass	19.4 kDa
AA Sequence	FVKQHLGPHLVEALYLVCGERGFFYTPKS
Purity	> 85% as determined by SDS-PAGE.
Notes	Repeated freezing and thawing is not recommended. Store working aliquots at 4 centigrade for up to one week.

 Tel: 1-631-559-9269 1-516-512-3133

 Email: info@creative-biomart.com  Fax: 1-631-938-8127

 45-1 Ramsey Road, Shirley, NY 11967, USA

Storage

The shelf life is related to many factors, storage state, buffer ingredients, storage temperature and the stability of the protein itself. Generally, the shelf life of liquid form is 6 months at -20 centigrade/-80 centigrade. The shelf life of lyophilized form is 12 months at -20 centigrade/-80 centigrade.

Concentration

A hardcopy of COA will be sent along with the products. Please refer to it for detailed information.

GENE INFORMATION

Gene Name [Ins1 insulin 1 \[Rattus norvegicus \]](#)

Official Symbol [INS1](#)

Synonyms [INS1](#); [insulin 1](#); [insulin-1](#);

Gene ID [24505](#)

mRNA Refseq [NM_019129](#)

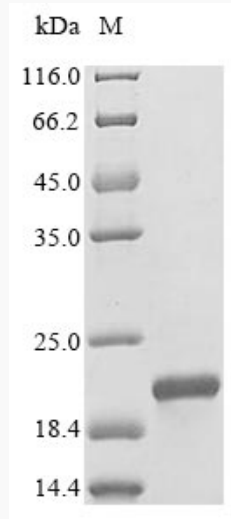
Protein Refseq [NP_062002](#)

UniProt ID [P01322](#)

 Tel: 1-631-559-9269 1-516-512-3133

 Email: info@creative-biomart.com  Fax: 1-631-938-8127

 45-1 Ramsey Road, Shirley, NY 11967, USA



(Tris-Glycine gel) Discontinuous SDS-PAGE (reduced) with 5% enrichment gel and 15% separation gel.

 Tel: 1-631-559-9269 1-516-512-3133

 Email: info@creative-biomart.com  Fax: 1-631-938-8127

 45-1 Ramsey Road, Shirley, NY 11967, USA