

Recombinant Mouse INS1 Protein, His/Myc-tagged

Cat. No. INS1-63M Lot. No. (See product label)

SPECIFICATION

Product Overview	Recombinant Mouse INS1 Protein, fused to His/Myc-tag, was expressed in E. coli.
Species	Mouse
Source	E.coli
Description	This gene encodes insulin, a peptide hormone that plays a vital role in the regulation of carbohydrate and lipid metabolism. The encoded precursor protein undergoes proteolytic cleavage to produce a disulfide-linked heterodimeric functional protein that is stored in secretory granules. An increase in blood glucose levels, among others, induces the release of insulin from the secretory granules. Mice deficient in the functional hormone encoded by this gene develop diabetes mellitus.
Form	PBS, pH 7.4.
Molecular Mass	12 kDa
AA Sequence	MGHHHHHHHHHHFVKQHLGPHLVEALYLVCGERGFFYTPKSRREVEDPQVEQLE LGGSPGDLQTLALEVARQKRGIVDQCCTSICSLYQLENYCNEQKLISEEDL
Endotoxin	1EU/ug by LAL.
Purity	>90%
Storage	Store it under sterile conditions at -20 to -80 centigrade. It is recommended that the

 Tel: 1-631-559-9269 1-516-512-3133

 Email: info@creative-biomart.com  Fax: 1-631-938-8127

 45-1 Ramsey Road, Shirley, NY 11967, USA

protein be aliquoted for optimal storage. Avoid repeated freeze-thaw cycles.

Concentration 1.7 mg/ml / 0.7 mg/ml

GENE INFORMATION

Gene Name [Ins1 insulin I \[Mus musculus \(house mouse\) \]](#)

Official Symbol [INS1](#)

Synonyms [Ins-1; Ins2-rs1](#)

Gene ID [16333](#)

mRNA Refseq [NM_008386](#)

Protein Refseq [NP_032412](#)

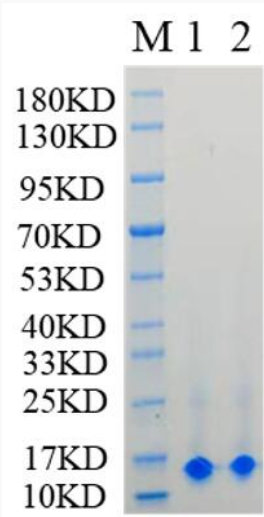
UniProt ID [P01325](#)

 Tel: 1-631-559-9269 1-516-512-3133

 Email: info@creative-biomart.com  Fax: 1-631-938-8127

 45-1 Ramsey Road, Shirley, NY 11967, USA

SDS-PAGE



Reducing 12% SDS-PAGE analysis profile of purified INS1(1-1.7mg/MI, 2-0.7mg/mL)(CBB stained).

 Tel: 1-631-559-9269 1-516-512-3133

 Email: info@creative-biomart.com  Fax: 1-631-938-8127

 45-1 Ramsey Road, Shirley, NY 11967, USA