

Recombinant Full Length Human INSIG2 Protein, C-Flag-tagged

Cat. No. INSIG2-1720HFL **Lot. No.** (See product label)

SPECIFICATION

Product Overview	Recombinant Full Length Human INSIG2 Protein, fused to Flag-tag at C-terminus, was expressed in Mammalian cells.
Species	Human
Source	Mammalian Cells
Description	The protein encoded by this gene is highly similar to the protein product encoded by gene INSIG1. Both INSIG1 protein and this protein are endoplasmic reticulum proteins that block the processing of sterol regulatory element binding proteins (SREBPs) by binding to SREBP cleavage-activating protein (SCAP), and thus prevent SCAP from escorting SREBPs to the Golgi.
Form	25 mM Tris HCl, pH 7.3, 100 mM glycine, 10% glycerol.
Molecular Mass	24.6 kDa
AA Sequence	MAEGETESPGPKKCGPYISSVTSQSVNLMIRGVVLLFFIGVFLALVLNLLQIQRNVTLF PPDVIASIFSSA WWVPPCCGTASAVIGLLYPCIDRHLGEPHKFKREWSSVMRCVAV FVGINHASAKVDFDNNIQLSLTLAAL SIGLWWTFFDRSRSGFGLGVGIAFLATVVTQLL VYNGVYQYTSPDFLYVRSWLPCIFFAGGITMGNIGRQL AMYECKVIAEKSHQETRTRPLEQKLISEEDLAANDILDYKDDDDKV
Purity	> 80% as determined by SDS-PAGE and Coomassie blue staining.

 Tel: 1-631-559-9269 1-516-512-3133

 Email: info@creative-biomart.com  Fax: 1-631-938-8127

 45-1 Ramsey Road, Shirley, NY 11967, USA

Stability	Stable for 12 months from the date of receipt of the product under proper storage and handling conditions. Avoid repeated freeze-thaw cycles.
Storage	Store at -80 centigrade.
Concentration	>50 ug/mL as determined by microplate BCA method.
Preparation	Recombinant protein was captured through anti-DDK affinity column followed by conventional chromatography steps.
Protein Families	Transmembrane
Full Length	Full L.

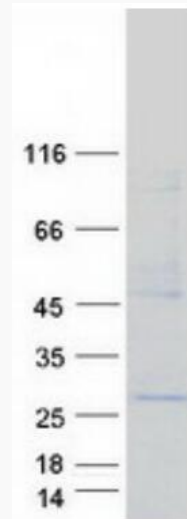
GENE INFORMATION

Gene Name	INSIG2 insulin induced gene 2 [Homo sapiens (human)]
Official Symbol	INSIG2
Synonyms	INSIG-2
Gene ID	51141
mRNA Refseq	NM_016133.4
Protein Refseq	NP_057217.2
MIM	608660
UniProt ID	Q9Y5U4

 Tel: 1-631-559-9269 1-516-512-3133

 Email: info@creative-biomart.com  Fax: 1-631-938-8127

 45-1 Ramsey Road, Shirley, NY 11967, USA



Coomassie blue staining of purified INSIG2 protein.

Tel: 1-631-559-9269 1-516-512-3133

Email: info@creative-biomart.com Fax: 1-631-938-8127

45-1 Ramsey Road, Shirley, NY 11967, USA