

Recombinant Human INSIG2 Protein, Myc/DDK-tagged, C13 and N15-labeled

Cat. No. INSIG2-2114H Lot. No. (See product label)

SPECIFICATION

Product Overview	INSIG2 MS Standard C13 and N15-labeled recombinant protein (NP_057217) with a C-terminal MYC/DDK tag, was expressed in HEK293 cells.
Species	Human
Source	HEK293
Description	The protein encoded by this gene is highly similar to the protein product encoded by gene INSIG1. Both INSIG1 protein and this protein are endoplasmic reticulum proteins that block the processing of sterol regulatory element binding proteins (SREBPs) by binding to SREBP cleavage-activating protein (SCAP), and thus prevent SCAP from escorting SREBPs to the Golgi.
Molecular Mass	24.8 kDa
AA Sequence	MAEGETESPGPKKCGPYISSVTSQSVNLMIRGVVLFVFLALVLNLLQQRNVTLF PPDVIASIFSSAWVPPCCGTASAVIGLLYPCIDRHLGEPHKFKREWSSVMRCVAVF VGINHASAKVDFDNNIQLSLTLAALSIGLWWTDFDRSRSGFGLGVGIAFLATVVTQLLV YNGVYQYTSPDFLYVRSWLPCIFFAGGITMGNIGRQLAMYECKVIAEKSHQETRTRP LEQKLISEEDLAANDILDYKDDDDKV
Purity	> 80% as determined by SDS-PAGE and Coomassie blue staining
Stability	Stable for 3 months from receipt of products under proper storage and handling

Tel: 1-631-559-9269 1-516-512-3133

Email: info@creative-biomart.com Fax: 1-631-938-8127

45-1 Ramsey Road, Shirley, NY 11967, USA

conditions.

Storage Store at -80 centigrade. Avoid repeated freeze-thaw cycles.

Concentration 50 µg/mL as determined by BCA

Storage Buffer 100 mM glycine, 25 mM Tris-HCl, pH 7.3.

GENE INFORMATION

Gene Name [INSIG2 insulin induced gene 2 \[Homo sapiens \(human\) \]](#)

Official Symbol [INSIG2](#)

Synonyms INSIG2; insulin induced gene 2; INSIG-2; insulin-induced gene 2 protein; INSIG2 membrane protein; insulin induced protein 2

Gene ID [51141](#)

mRNA Refseq [NM_016133](#)

Protein Refseq [NP_057217](#)

MIM [608660](#)

UniProt ID [Q9Y5U4](#)

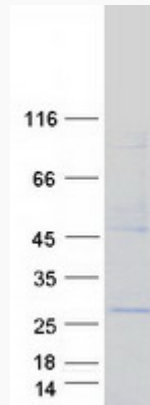
 Tel: 1-631-559-9269 1-516-512-3133

 Email: info@creative-biomart.com  Fax: 1-631-938-8127

 45-1 Ramsey Road, Shirley, NY 11967, USA



SDS-PAGE



Tel: 1-631-559-9269 1-516-512-3133

Email: info@creative-biomart.com Fax: 1-631-938-8127

45-1 Ramsey Road, Shirley, NY 11967, USA