

Recombinant Human INSIG2 Protein, GST-tagged

Cat. No. INSIG2-5098H Lot. No. (See product label)

SPECIFICATION

Product Overview	Human INSIG2 full-length ORF (AAH22475, 1 a.a. - 225 a.a.) recombinant protein with GST-tag at N-terminal.
Species	Human
Source	Wheat Germ
Description	The protein encoded by this gene is highly similar to the protein product encoded by gene INSIG1. Both INSIG1 protein and this protein are endoplasmic reticulum proteins that block the processing of sterol regulatory element binding proteins (SREBPs) by binding to SREBP cleavage-activating protein (SCAP), and thus prevent SCAP from escorting SREBPs to the Golgi. [provided by RefSeq
Molecular Mass	50.49 kDa
AA Sequence	MAEGETEPPGPKKCGPYISSVTSQSVNLMIRGVVLFVFLALVLNLLQIQRNVTLF PPDVIASIFSSAWVPPCCGTASAVIGLLYPCIDRHLGEPHKFKREWSSVMRCVAVF VGINHASAKVDFDNNIQLSLTLAALSIGLWWTFFDRSRSGFGLGVGIAFLATVVTQPLV YNGVYQYTSPDFLYVRSWLPCIFFAGGITMGNIGRQLAVYECKVIAEKSHQE
Applications	Enzyme-linked Immunoabsorbent Assay Western Blot (Recombinant protein) Antibody Production Protein Array

 Tel: 1-631-559-9269 1-516-512-3133

 Email: info@creative-biomart.com  Fax: 1-631-938-8127

 45-1 Ramsey Road, Shirley, NY 11967, USA

Notes	Best use within three months from the date of receipt of this protein.
Storage	Store at -80 centigrade. Aliquot to avoid repeated freezing and thawing.
Storage Buffer	50 mM Tris-HCl, 10 mM reduced Glutathione, pH=8.0 in the elution buffer.

GENE INFORMATION

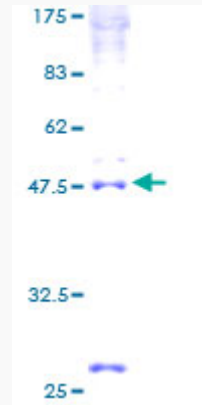
Gene Name	INSIG2 insulin induced gene 2 [Homo sapiens (human)]
Official Symbol	INSIG2
Synonyms	INSIG2; insulin induced gene 2; INSIG-2; insulin-induced gene 2 protein; INSIG2 membrane protein; insulin induced protein 2
Gene ID	51141
mRNA Refseq	NM_001321329
Protein Refseq	NP_001308258
MIM	608660
UniProt ID	Q9Y5U4

 Tel: 1-631-559-9269 1-516-512-3133

 Email: info@creative-biomart.com  Fax: 1-631-938-8127

 45-1 Ramsey Road, Shirley, NY 11967, USA

**Quality Control
Testing**



12.5% SDS-PAGE Stained with Coomassie Blue

 Tel: 1-631-559-9269 1-516-512-3133

 Email: info@creative-biomart.com  Fax: 1-631-938-8127

 45-1 Ramsey Road, Shirley, NY 11967, USA