

Recombinant Human INSL3 Protein (Leu21-Tyr131), C-His tagged

Cat. No. INSL3-3376H Lot. No. (See product label)

SPECIFICATION

| | |
|-------------------------|---|
| Product Overview | Recombinant human INSL3 (Leu21-Tyr131) protein fused with the C-terminal His tag was expressed in Mammalian cells. |
| Species | Human |
| Source | Mammalian Cells |
| ProteinLength | Leu21-Tyr131 |
| Molecular Mass | 12.21 kDa |
| Purity | >90 % as determined by SDS-PAGE. |
| Notes | For research use only. |
| Storage | Use a manual defrost freezer and avoid repeated freeze thaw cycles. Store at 2 to 8 centigrade for one week. Store at -20 to -80 centigrade for twelve months from the date of receipt. |
| Storage Buffer | Supplied as solution form in PBS or lyophilized from PBS. |
| Reconstitution | Reconstitute in sterile water for a stock solution. |
| Shipping | In general, proteins are provided as lyophilized powder/frozen liquid. They are |

 Tel: 1-631-559-9269 1-516-512-3133

 Email: info@creative-biomart.com  Fax: 1-631-938-8127

 45-1 Ramsey Road, Shirley, NY 11967, USA

shipped out with dry ice/blue ice unless customers require otherwise.

GENE INFORMATION

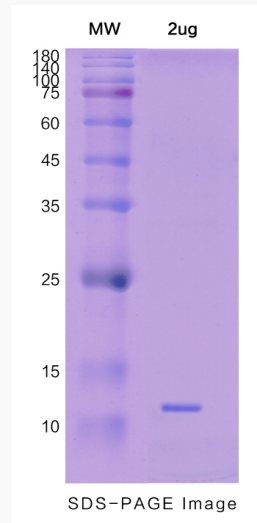
| | |
|------------------------|---|
| Gene Name | INSL3 insulin-like 3 (Leydig cell) [Homo sapiens (human)] |
| Official Symbol | INSL3 |
| Synonyms | INSL3; insulin-like 3 (Leydig cell); relaxin like factor, RLNL; insulin-like 3; MGC119818; MGC119819; RLF; ley-I-L; relaxin-like factor b; leydig insulin-like peptide; leydig insulin -like hormone; leydig insulin -like peptide; RLNL; |
| Gene ID | 3640 |
| mRNA Refseq | NM_005543 |
| Protein Refseq | NP_005534 |
| MIM | 146738 |
| UniProt ID | P51460 |

 Tel: 1-631-559-9269 1-516-512-3133

 Email: info@creative-biomart.com  Fax: 1-631-938-8127

 45-1 Ramsey Road, Shirley, NY 11967, USA

SDS-PAGE



 Tel: 1-631-559-9269 1-516-512-3133

 Email: info@creative-biomart.com  Fax: 1-631-938-8127

 45-1 Ramsey Road, Shirley, NY 11967, USA