

## Recombinant Human INSL3 Protein (Asp2-Cys129), N-His tagged

**Cat. No.** INSL3-3377H    **Lot. No.** (See product label)

### SPECIFICATION

<b>Product Overview</b>	Recombinant human INSL3 (Asp2-Cys129) protein fused with the N-His tag was expressed in E. coli.
<b>Species</b>	Human
<b>Source</b>	E.coli
<b>ProteinLength</b>	Asp2-Cys129
<b>Molecular Mass</b>	16.42 kDa
<b>Purity</b>	>90 % as determined by SDS-PAGE.
<b>Notes</b>	For research use only.
<b>Storage</b>	Use a manual defrost freezer and avoid repeated freeze thaw cycles. Store at 2 to 8 centigrade for one week. Store at -20 to -80 centigrade for twelve months from the date of receipt.
<b>Storage Buffer</b>	0.01M PBS, pH 7.4, 0.02 % NLS
<b>Reconstitution</b>	Reconstitute in sterile water for a stock solution.
<b>Shipping</b>	In general, proteins are provided as lyophilized powder/frozen liquid. They are

 Tel: 1-631-559-9269    1-516-512-3133

 Email: [info@creative-biomart.com](mailto:info@creative-biomart.com)     Fax: 1-631-938-8127

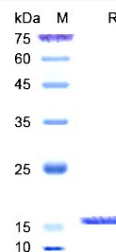
 45-1 Ramsey Road, Shirley, NY 11967, USA

shipped out with dry ice/blue ice unless customers require otherwise.

## GENE INFORMATION

<b>Gene Name</b>	INSL3 insulin-like 3 (Leydig cell) [ Homo sapiens (human) ]
<b>Official Symbol</b>	INSL3
<b>Synonyms</b>	INSL3; insulin-like 3 (Leydig cell); relaxin like factor, RLNL; insulin-like 3; MGC119818; MGC119819; RLF; ley-I-L; relaxin-like factor b; leydig insulin-like peptide; leydig insulin -like hormone; leydig insulin -like peptide; RLNL;
<b>Gene ID</b>	3640
<b>mRNA Refseq</b>	NM_005543
<b>Protein Refseq</b>	NP_005534
<b>MIM</b>	146738
<b>UniProt ID</b>	P51460

## SDS-PAGE



Tel: 1-631-559-9269 1-516-512-3133

Email: [info@creative-biomart.com](mailto:info@creative-biomart.com) Fax: 1-631-938-8127

45-1 Ramsey Road, Shirley, NY 11967, USA