

# Recombinant Human INSL3 Protein, Myc/DDK-tagged, C13 and N15-labeled

**Cat. No.** INSL3-4101H    **Lot. No.** (See product label)

## SPECIFICATION

<b>Product Overview</b>	INSL3 MS Standard C13 and N15-labeled recombinant protein (NP_005534) with a C-terminal MYC/DDK tag, was expressed in HEK293 cells.
<b>Species</b>	Human
<b>Source</b>	HEK293
<b>Description</b>	This gene encodes a member of the insulin-like hormone superfamily. The encoded protein is mainly produced in gonadal tissues. Studies of the mouse counterpart suggest that this gene may be involved in the development of urogenital tract and female fertility. This protein may also act as a hormone to regulate growth and differentiation of gubernaculum, and thus mediating intra-abdominal testicular descent. Mutations in this gene may lead to cryptorchidism. Alternate splicing results in multiple transcript variants.
<b>Molecular Mass</b>	14.5 kDa
<b>AA Sequence</b>	MDPRLPAWALVLLGPALVFALGPAPTPEMREKLCGHHFVRALVRVCGGPRWSTEAR RPAAGGDRELLQWLERRHLLHGLVADSNLTLGPGQLPQTSHHHRHHRAAATN PARYCCLSGCTQQDLLTLCPTYTRTRPLEQKLISEEDLAANDILDYKDDDDKV
<b>Purity</b>	> 80% as determined by SDS-PAGE and Coomassie blue staining
<b>Stability</b>	Stable for 3 months from receipt of products under proper storage and handling

 Tel: 1-631-559-9269    1-516-512-3133

 Email: [info@creative-biomart.com](mailto:info@creative-biomart.com)     Fax: 1-631-938-8127

 45-1 Ramsey Road, Shirley, NY 11967, USA

conditions.

**Storage** Store at -80 centigrade. Avoid repeated freeze-thaw cycles.

**Concentration** 50 µg/mL as determined by BCA

**Storage Buffer** 100 mM glycine, 25 mM Tris-HCl, pH 7.3.

## GENE INFORMATION

**Gene Name** [INSL3 insulin like 3 \[ Homo sapiens \(human\) \]](#)

**Official Symbol** [INSL3](#)

**Synonyms** INSL3; insulin-like 3 (Leydig cell); relaxin like factor, RLNL; insulin-like 3; MGC119818; MGC119819; RLF; ley-I-L; relaxin-like factor b; leydig insulin-like peptide; leydig insulin -like hormone; leydig insulin -like peptide; RLNL;

**Gene ID** [3640](#)

**mRNA Refseq** [NM\\_005543](#)

**Protein Refseq** [NP\\_005534](#)

**MIM** [146738](#)

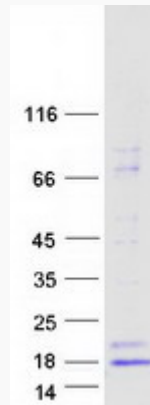
**UniProt ID** [P51460](#)

 Tel: 1-631-559-9269 1-516-512-3133

 Email: [info@creative-biomart.com](mailto:info@creative-biomart.com)  Fax: 1-631-938-8127

 45-1 Ramsey Road, Shirley, NY 11967, USA

**SDS-PAGE**



 Tel: 1-631-559-9269 1-516-512-3133

 Email: [info@creative-biomart.com](mailto:info@creative-biomart.com)  Fax: 1-631-938-8127

 45-1 Ramsey Road, Shirley, NY 11967, USA