

Recombinant Human INSL4 Protein (Ala26-Thr139), C-His tagged

Cat. No. INSL4-3117H Lot. No. (See product label)

SPECIFICATION

Product Overview	Recombinant human INSL4 (Ala26-Thr139) protein fused with the C-terminal His tag was expressed in Mammalian cells.
Species	Human
Source	Mammalian Cells
ProteinLength	Ala26-Thr139
Molecular Mass	12.65 kDa
Purity	>90 % as determined by SDS-PAGE.
Notes	For research use only.
Storage	Use a manual defrost freezer and avoid repeated freeze thaw cycles. Store at 2 to 8 centigrade for one week. Store at -20 to -80 centigrade for twelve months from the date of receipt.
Storage Buffer	Supplied as solution form in PBS or lyophilized from PBS.
Reconstitution	Reconstitute in sterile water for a stock solution.
Shipping	In general, proteins are provided as lyophilized powder/frozen liquid. They are

 Tel: 1-631-559-9269 1-516-512-3133

 Email: info@creative-biomart.com  Fax: 1-631-938-8127

 45-1 Ramsey Road, Shirley, NY 11967, USA



shipped out with dry ice/blue ice unless customers require otherwise.

GENE INFORMATION

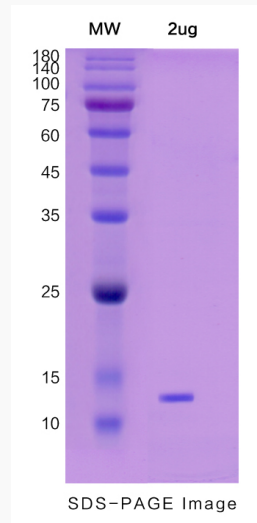
Gene Name	INSL4 insulin-like 4 (placenta) [Homo sapiens (human)]
Official Symbol	INSL4
Synonyms	INSL4; insulin-like 4 (placenta); early placenta insulin-like peptide; EPIL; insulin-like peptide 4; early placenta insulin-like peptide (EPIL); PLACENTIN;
Gene ID	3641
mRNA Refseq	NM_002195
Protein Refseq	NP_002186
MIM	600910
UniProt ID	Q14641

 Tel: 1-631-559-9269 1-516-512-3133

 Email: info@creative-biomart.com  Fax: 1-631-938-8127

 45-1 Ramsey Road, Shirley, NY 11967, USA

SDS-PAGE



 Tel: 1-631-559-9269 1-516-512-3133

 Email: info@creative-biomart.com  Fax: 1-631-938-8127

 45-1 Ramsey Road, Shirley, NY 11967, USA