

## Recombinant Human INSL4 Protein, GST-tagged

Cat. No. INSL4-5096H Lot. No. (See product label)

### SPECIFICATION

<b>Product Overview</b>	Human INSL4 full-length ORF ( AAH26254, 26 a.a. - 139 a.a.) recombinant protein with GST-tag at N-terminal.
<b>Species</b>	Human
<b>Source</b>	Wheat Germ
<b>Description</b>	INSL4 encodes the insulin-like 4 protein, a member of the insulin superfamily. INSL4 encodes a precursor that undergoes post-translational cleavage to produce 3 polypeptide chains, A-C, that form tertiary structures composed of either all three chains, or just the A and B chains. Expression of INSL4 products occurs within the early placental cytotrophoblast and syncytiotrophoblast. [provided by RefSeq
<b>Molecular Mass</b>	38.28 kDa
<b>AA Sequence</b>	AELRGCGPRFGKHLLSYCPMPEKTFTTTPGGWLLESGRPKEMVSTSNKDGQALG TTSEFIPNLSPELKKPLSEGQPSLKKIILSRKKRSGRHRFDPFCCEVICDDGTSVKLCT
<b>Applications</b>	Enzyme-linked Immunoabsorbent Assay Western Blot (Recombinant protein) Antibody Production Protein Array
<b>Notes</b>	Best use within three months from the date of receipt of this protein.

 Tel: 1-631-559-9269 1-516-512-3133

 Email: [info@creative-biomart.com](mailto:info@creative-biomart.com)  Fax: 1-631-938-8127

 45-1 Ramsey Road, Shirley, NY 11967, USA

**Storage** Store at -80 centigrade. Aliquot to avoid repeated freezing and thawing.

**Storage Buffer** 50 mM Tris-HCl, 10 mM reduced Glutathione, pH=8.0 in the elution buffer.

## GENE INFORMATION

**Gene Name** [INSL4 insulin-like 4 \(placenta\) \[ Homo sapiens \]](#)

**Official Symbol** [INSL4](#)

**Synonyms** INSL4; insulin-like 4 (placenta); early placenta insulin-like peptide; EPIL; insulin-like peptide 4; early placenta insulin-like peptide (EPIL); PLACENTIN;

**Gene ID** [3641](#)

**mRNA Refseq** [NM\\_002195](#)

**Protein Refseq** [NP\\_002186](#)

**MIM** [600910](#)

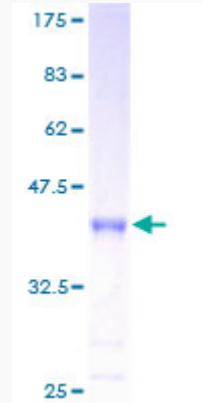
**UniProt ID** [Q14641](#)

 Tel: 1-631-559-9269 1-516-512-3133

 Email: [info@creative-biomart.com](mailto:info@creative-biomart.com)  Fax: 1-631-938-8127

 45-1 Ramsey Road, Shirley, NY 11967, USA

**Quality Control  
Testing**



12.5% SDS-PAGE Stained with Coomassie Blue

 Tel: 1-631-559-9269 1-516-512-3133

 Email: [info@creative-biomart.com](mailto:info@creative-biomart.com)  Fax: 1-631-938-8127

 45-1 Ramsey Road, Shirley, NY 11967, USA