

Recombinant Human INSL5 Protein, GST-tagged

Cat. No. INSL5-5095H Lot. No. (See product label)

SPECIFICATION

Product Overview	Human INSL5 full-length ORF (NP_005469, 1 a.a. - 135 a.a.) recombinant protein with GST-tag at N-terminal.
Species	Human
Source	Wheat Germ
Description	The protein encoded by this gene contains a classical signature of the insulin superfamily and is highly similar to relaxin 3 (RLN3/INSL7). [provided by RefSeq]
Molecular Mass	40.48 kDa
AA Sequence	MKGSIFTLFLFSVLFAISEVRSKESVRLCGLEYIRTVIYICASSRWRRHLEGIPQAQQA ETGNSFQLPHKREFSEENPAQNLPKVDASGEDRLWGGQMPTEELWKS KHSVMS RQDLQTLCCCTDGCSMTDLSALC
Applications	Enzyme-linked Immunoabsorbent Assay Western Blot (Recombinant protein) Antibody Production Protein Array
Notes	Best use within three months from the date of receipt of this protein.
Storage	Store at -80 centigrade. Aliquot to avoid repeated freezing and thawing.

 Tel: 1-631-559-9269 1-516-512-3133

 Email: info@creative-biomart.com  Fax: 1-631-938-8127

 45-1 Ramsey Road, Shirley, NY 11967, USA

Storage Buffer 50 mM Tris-HCl, 10 mM reduced Glutathione, pH=8.0 in the elution buffer.

GENE INFORMATION

Gene Name [INSL5 insulin-like 5 \[Homo sapiens \]](#)

Official Symbol [INSL5](#)

Synonyms INSL5; insulin-like 5; insulin-like peptide INSL5; insulin-like peptide 5; PRO182; UNQ156; MGC126695; MGC126697;

Gene ID [10022](#)

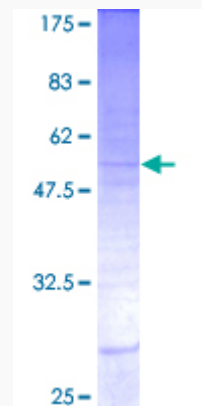
mRNA Refseq [NM_005478](#)

Protein Refseq [NP_005469](#)

MIM [606413](#)

UniProt ID [Q9Y5Q6](#)

Quality Control Testing



 Tel: 1-631-559-9269 1-516-512-3133

 Email: info@creative-biomart.com  Fax: 1-631-938-8127

 45-1 Ramsey Road, Shirley, NY 11967, USA



12.5% SDS-PAGE Stained with Coomassie Blue

 Tel: 1-631-559-9269 1-516-512-3133

 Email: info@creative-biomart.com  Fax: 1-631-938-8127

 45-1 Ramsey Road, Shirley, NY 11967, USA