

Recombinant Human INSL6 protein, His-tagged

Cat. No. INSL6-3337H Lot. No. (See product label)

SPECIFICATION

Product Overview	Recombinant Human INSL6 protein(Arg21~Phe198), fused with N-terminal His Tag, was expressed in E.coli.
Species	Human
Source	E.coli
ProteinLength	Arg21~Phe198
Form	PBS, pH7.4, containing 0.01% SKL, 1mM DTT, 5% Trehalose and Proclin300.
Molecular Mass	43.15kDa
Endotoxin	<1.0EU per 1g (determined by the LAL method)
Purity	> 90%
Storage	Avoid repeated freeze/thaw cycles. Store at 2-8°C for one month. Aliquot and store at -80°C for 12 months.
Reconstitution	Reconstitute in 10mM PBS (pH7.4) to a concentration of 0.1-1.0 mg/mL. Do not vortex.

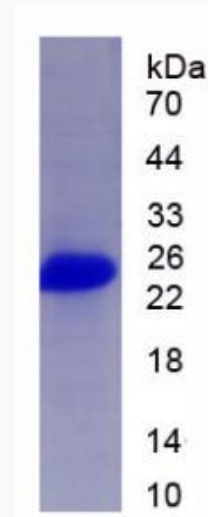
GENE INFORMATION

 Tel: 1-631-559-9269 1-516-512-3133

 Email: info@creative-biomart.com  Fax: 1-631-938-8127

 45-1 Ramsey Road, Shirley, NY 11967, USA

Gene Name	INSL6 insulin-like 6 [Homo sapiens]
Official Symbol	INSL6
Synonyms	RIF1
Gene ID	11172
mRNA Refseq	NM_007179.2
Protein Refseq	NP_009110.2
MIM	606414
UniProt ID	Q9Y581

SDS-PAGE

 Tel: 1-631-559-9269 1-516-512-3133

 Email: info@creative-biomart.com  Fax: 1-631-938-8127

 45-1 Ramsey Road, Shirley, NY 11967, USA