

Recombinant Human INSR Protein (Met1-Ser758), C-His tagged

Cat. No. INSR-4313H Lot. No. (See product label)

SPECIFICATION

Product Overview	Recombinant human INSR (Met1-Ser758) fused with the C-terminal His tag was expressed in Mammalian cells.
Species	Human
Source	Mammalian Cells
ProteinLength	Met1-Ser758
Description	<p>Insulin receptor (INSR) is also known as CD antigen CD220, which can be cleaved into the following 2 chains: Insulin receptor subunit alpha and Insulin receptor subunit beta. INSR is a tetramer of 2 alpha and 2 beta chains linked by disulfide bonds. The alpha chains carry the insulin-binding regions, while the beta chains carry the kinase domain. Forms a hybrid receptor with IGF1R, the hybrid is a tetramer consisting of 1 alpha chain and 1 beta chain of INSR and 1 alpha chain and 1 beta chain of IGF1R. In addition to binding insulin, the insulin receptor can bind insulin-like growth factors (IGFI and IGFI) . Isoform Short of INSR has a higher affinity for IGFI binding. When present in a hybrid receptor with IGF1R, INSR binds IGF1.</p>
Form	Lyophilized powder/frozen liquid
Molecular Mass	83.38 kDa
Endotoxin	< 1.0 EU/μg of the protein as determined by the LAL method.

 Tel: 1-631-559-9269 1-516-512-3133

 Email: info@creative-biomart.com  Fax: 1-631-938-8127

 45-1 Ramsey Road, Shirley, NY 11967, USA

Purity	>90% as determined by SDS-PAGE.
Notes	For research use only.
Storage	Use a manual defrost freezer and avoid repeated freeze thaw cycles. Store at 2 to 8 centigrade for one week. Store at -20 to -80 centigrade for twelve months from the date of receipt.
Storage Buffer	Supplied as solution form in PBS or lyophilized from PBS.
Reconstitution	Reconstitute in sterile water for a stock solution.
Shipping	They are shipped out with dry ice/blue ice unless customers require otherwise.

GENE INFORMATION

Gene Name	INSR insulin receptor [Homo sapiens (human)]
Official Symbol	INSR
Synonyms	INSR; insulin receptor; CD220; IR; HHF5;
Gene ID	3643
mRNA Refseq	NM_000208
Protein Refseq	NP_000199
MIM	147670
UniProt ID	P06213

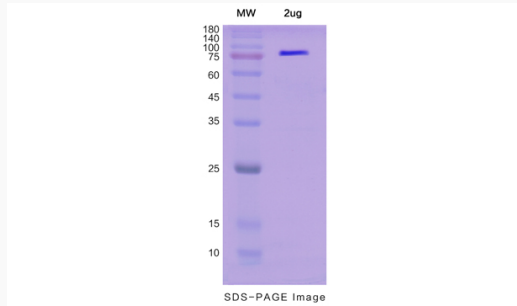
 Tel: 1-631-559-9269 1-516-512-3133

 Email: info@creative-biomart.com  Fax: 1-631-938-8127

 45-1 Ramsey Road, Shirley, NY 11967, USA



SDS-PAGE



Tel: 1-631-559-9269 1-516-512-3133

Email: info@creative-biomart.com Fax: 1-631-938-8127

45-1 Ramsey Road, Shirley, NY 11967, USA