

## Active Recombinant Human INSR Protein, GST-tagged

**Cat. No.** INSR-5093H    **Lot. No.** (See product label)

### SPECIFICATION

<b>Product Overview</b>	Human INSR (NM_000208, 989 a.a. - 1382 a.a.) partial recombinant protein with GST tag expressed in Sf9 cells.
<b>Species</b>	Human
<b>Source</b>	Insect Cells
<b>ProteinLength</b>	989-1382 a.a.
<b>Description</b>	After removal of the precursor signal peptide, the insulin receptor precursor is post-translationally cleaved into two chains (alpha and beta) that are covalently linked. Binding of insulin to the insulin receptor (INSR) stimulates glucose uptake. Two transcript variants encoding different isoforms have been found for this gene. [provided by RefSeq]
<b>Form</b>	Liquid
<b>Bio-activity</b>	533 pmol/μg x min
<b>Molecular Mass</b>	70.392 kDa
<b>Applications</b>	Functional Study SDS-PAGE
<b>Storage</b>	Store at -80 centigrade. Aliquot to avoid repeated freezing and thawing.

 Tel: 1-631-559-9269    1-516-512-3133

 Email: [info@creative-biomart.com](mailto:info@creative-biomart.com)     Fax: 1-631-938-8127

 45-1 Ramsey Road, Shirley, NY 11967, USA



**Concentration** 0.189 µg/µL

**Storage Buffer** In 50 mM Hepes, 100 mM NaCl, pH 7.5. (5 mM DTT, 4 mM reduced glutathione, 20% glycerol)

## GENE INFORMATION

**Gene Name** INSR insulin receptor [ Homo sapiens ]

**Official Symbol** INSR

**Synonyms** INSR; insulin receptor; CD220; IR; HHF5;

**Gene ID** 3643

**mRNA Refseq** NM\_000208

**Protein Refseq** NP\_000199

**MIM** 147670

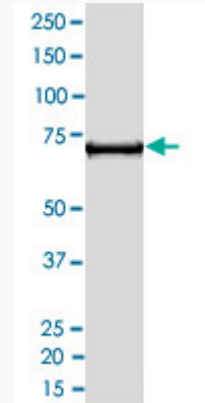
**UniProt ID** P06213

 Tel: 1-631-559-9269 1-516-512-3133

 Email: [info@creative-biomart.com](mailto:info@creative-biomart.com)  Fax: 1-631-938-8127

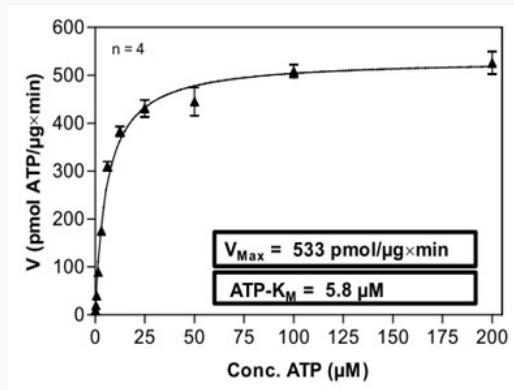
 45-1 Ramsey Road, Shirley, NY 11967, USA

**Quality Control  
Testing**



2 µg/lane SDS-PAGE Stained with Coomassie Blue

**Result of activity  
analysis**



Tel: 1-631-559-9269 1-516-512-3133

Email: [info@creative-biomart.com](mailto:info@creative-biomart.com) Fax: 1-631-938-8127

45-1 Ramsey Road, Shirley, NY 11967, USA