

Recombinant Human INSRR protein, His & T7-tagged

Cat. No. INSRR-1045H Lot. No. (See product label)

SPECIFICATION

Product Overview	Recombinant Human INSRR aa. (Gly1090~Pro1295 (Accession # P14616) fused with N-terminal His & T7 tag was produced in E. coli cells.
Species	Human
Source	E.coli
ProteinLength	Gly1090~Pro1295
Form	Freeze-dried powder
Molecular Mass	Predicted Molecular Mass: 26.8kDa.
Endotoxin	<1.0EU per 1g (determined by the LAL method)
Purity	>90%
Characteristic	The isoelectric point is 4.8.
Applications	SDS-PAGE; WB; ELISA; IP.
Stability	The thermal stability is described by the loss rate of the target protein. The loss rate was determined by accelerated thermal degradation test, that is, incubate the protein at 37°C for 48h, and no obvious degradation and precipitation were observed. (Referring from China Biological Products Standard, which was calculated by the

 Tel: 1-631-559-9269 1-516-512-3133

 Email: info@creative-biomart.com  Fax: 1-631-938-8127

 45-1 Ramsey Road, Shirley, NY 11967, USA

Arrhenius equation.) The loss of this protein is less than 5% within the expiration date under appropriate storage condition.

Storage

Avoid repeated freeze/thaw cycles. Store at 2-8°C for one month. Aliquot and store at -80°C for 12 months.

Storage buffer

Supplied as lyophilized form in 20mM Tris, 150mM NaCl, pH8.0, containing 1mM EDTA, 1mM DTT, 0.01% sarcosyl, 5% trehalose, and preservative.

Reconstitution

Reconstitute in sterile ddH₂O.

GENE INFORMATION

Gene Name

[INSRR insulin receptor related receptor \[Homo sapiens \(human\) \]](#)

Official Symbol

[INSRR](#)

Synonyms

INSRR; insulin receptor related receptor; IRR; insulin receptor-related protein; IR-related receptor

Gene ID

[3645](#)

mRNA Refseq

[NM_014215.2](#)

Protein Refseq

[NP_055030.1](#)

UniProt ID

[P14616](#)

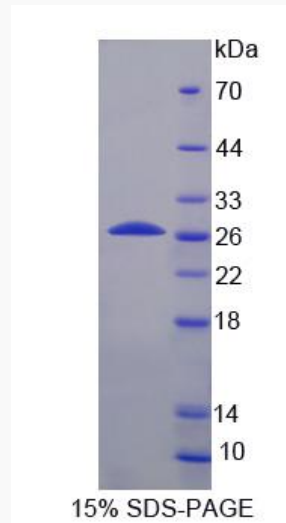
 Tel: 1-631-559-9269 1-516-512-3133

 Email: info@creative-biomart.com  Fax: 1-631-938-8127

 45-1 Ramsey Road, Shirley, NY 11967, USA



SDS-PAGE



Tel: 1-631-559-9269 1-516-512-3133

Email: info@creative-biomart.com Fax: 1-631-938-8127

45-1 Ramsey Road, Shirley, NY 11967, USA