

## Recombinant Human INSRR Protein, GST-tagged

Cat. No. INSRR-5090H Lot. No. (See product label)

### SPECIFICATION

<b>Product Overview</b>	Human INSRR partial ORF ( NP_055030, 651 a.a. - 760 a.a.) recombinant protein with GST-tag at N-terminal.
<b>Species</b>	Human
<b>Source</b>	Wheat Germ
<b>Description</b>	INSRR (Insulin Receptor Related Receptor) is a Protein Coding gene. Diseases associated with INSRR include Podoconiosis and Neurofibrosarcoma. Among its related pathways are GPCR Pathway and MAPK Signaling: Mitogen Stimulation Pathway. GO annotations related to this gene include transferase activity, transferring phosphorus-containing groups and protein tyrosine kinase activity. An important paralog of this gene is IGF1R.
<b>Molecular Mass</b>	37.73 kDa
<b>AA Sequence</b>	LYLNDYCHRGLRLPTSNNDRFDGEDGDPEAEMESDCCPCQHPPPGQVLPPLEAQ EASFQKKFENFLHNAITIPSPWKVTSINKSPQRDSGRHRAAGPLRLGGNSSDF
<b>Applications</b>	Enzyme-linked Immunoabsorbent Assay Western Blot (Recombinant protein) Antibody Production Protein Array
<b>Notes</b>	Best use within three months from the date of receipt of this protein.

 Tel: 1-631-559-9269 1-516-512-3133

 Email: [info@creative-biomart.com](mailto:info@creative-biomart.com)  Fax: 1-631-938-8127

 45-1 Ramsey Road, Shirley, NY 11967, USA

**Storage** Store at -80 centigrade. Aliquot to avoid repeated freezing and thawing.

**Storage Buffer** 50 mM Tris-HCl, 10 mM reduced Glutathione, pH=8.0 in the elution buffer.

## GENE INFORMATION

**Gene Name** [INSRR insulin receptor-related receptor \[ Homo sapiens \]](#)

**Official Symbol** [INSRR](#)

**Synonyms** INSRR; insulin receptor-related receptor; insulin receptor-related protein; IRR; IR-related receptor;

**Gene ID** [3645](#)

**mRNA Refseq** [NM\\_014215](#)

**Protein Refseq** [NP\\_055030](#)

**MIM** [147671](#)

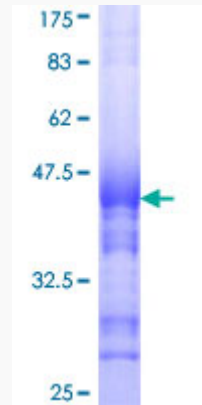
**UniProt ID** [P14616](#)

 Tel: 1-631-559-9269 1-516-512-3133

 Email: [info@creative-biomart.com](mailto:info@creative-biomart.com)  Fax: 1-631-938-8127

 45-1 Ramsey Road, Shirley, NY 11967, USA

**Quality Control  
Testing**



12.5% SDS-PAGE Stained with Coomassie Blue

 Tel: 1-631-559-9269 1-516-512-3133

 Email: [info@creative-biomart.com](mailto:info@creative-biomart.com)  Fax: 1-631-938-8127

 45-1 Ramsey Road, Shirley, NY 11967, USA