

Recombinant Human INTS1 Protein, Myc/DDK-tagged, C13 and N15-labeled

Cat. No. INTS1-6473H **Lot. No.** (See product label)

SPECIFICATION

Product Overview	INTS1 MS Standard C13 and N15-labeled recombinant protein (NP_001073922) with a C-terminal MYC/DDK tag, was expressed in HEK293 cells.
Species	Human
Source	HEK293
Description	INTS1 is a subunit of the Integrator complex, which associates with the C-terminal domain of RNA polymerase II large subunit (POLR2A) and mediates 3-prime end processing of small nuclear RNAs U1 (RNU1) and U2 (RNU2).
Molecular Mass	244.7 kDa
AA Sequence	<p>MNRAKPTTVRRPSAAAKPSGHPPP GDFIALGSKGQANESKTASTLLKPAPSGLPSE RKRDAAAAALSSASALTGLTKRPKLSSTPPLSALGRLAEAAVAEKRAISPSIKEPSVVPI EVLPTVLLDEIEAAELEGNDDRIEGVLCGAVKQLKVTRAKPDSTLYLSLMYLAKIKPNI FATEGVIEALCSLLRRDASINFKAKGNSLVSVLACNLLMAAYEEDENWPEIFVKVYIE DSLGERIWWDSPHCKTFVDNIQTAFNTRMPPRSVLLQGEAGRVAGDLGAGSSPHPS LTEEEDSQTELLIAEEKLSPEQEGQLMPRYEELAESVEEYVLDMLRDQLNRRQPIDN VSRNLLRLLTSTCGYKEVRL LAVQKLEMWLQNPKLTRPAQDLLMSVCMNCNTHGSE DMDVISHLIKIRLKPVLLNHFMLCIRELLSAHKDNLGTTIKLVIFNELSSARNPNMNV LYTALQHSSELAPKFLAMVFQDLLTNKDDYL RASRALLREI IKQTKHEINFQAFCLGL MQRKEPQYLEMEFKERFVVHITDVLAVSMMLGITAQVKEAGIAWDKGEKRNLEVL</p>

 Tel: 1-631-559-9269 1-516-512-3133

 Email: info@creative-biomart.com  Fax: 1-631-938-8127

 45-1 Ramsey Road, Shirley, NY 11967, USA



RSFQNQIAAIQRDAVWWLHTVVPSISKLAPKDYVHCLHKVLFTEQPETYKWDNWP
PESDRNFFLRRCSEVPILEDTLMRILVIGLSRELPLGPADAMELADHLVKRAAAVQAD
DVEVLKVGRTQLIDAVLNLCTYHHPENIQLPPGYQPPNLAISTLYWKAWPLLLVAAF
NPENIGLAAWEEYPTLKMLMEMVMTNYSYPPCTLTDEETRTEMLNRELQTAQREK
QEILAFEGHLAAASTKQTITESSSLLLSQLTSLDPQGPPRRPPPHILDQVKSLNQSLRL
GHLLCRSRNPDFLLHIIQRQASSQSMPWLADLVQSSEGSGLDVLVPVQCLCEFLHDAV
DDAASGEEDDEGESKEQKAKKRQRQKQRQLLGRQLDLLLLGPKADEQTTCEVLDY
FLRRLGSSQVASRVLAMKGLSLVLSEGLSRDGEKEPPMEEDVGD TDV LQGYQWL
LRDLPRPLPFD SVRSTTALALQQAIHMETDPQTISAYLIYLSQHTPVEEQAQHS DAL
DVARLVVERSTIMSHLFSKLSPSAASDAVLSALLSIFSRVRRMRQSKEGEEVYSWS
ESQDQVFLRWSSGETATMHILVVHAMVILLTLGPPRADDSEFQALLDIWFPEEKPLP
TAFVDTSEEALLLPDWLKL RMIRSEVLRVDAALQDLEPQQLL FVQSF GIPVSSMS
KLLQFLDQAVAHDPQTLEQNIMDKNYMAHLVEVQHERGASGGQTFHSLLTASLPPR
RDSTEAPKPKSSPEQPIGQGRIRVGTQLRVLGPEDDLAGMFLQIFPLSPDPRWQSS
SPRPVALALQQALGQELARVVQGSPEVPGITVRVLQALATLLSSPHGGALVMSMHR
SHFLACPLLRQLCQYQRCVPQDTGFSSLFLKVLQMLQWLDSPGVEGGPLRAQLR
MLASQASAGRRLSDVRGGLLR LAEALAFRQDLEVVSSTVRAVIATLRSGEQCSVEP
DLISKVLQGLIEVRSPHLEELLTAFFSATADAASPPACKPVVVVSSLLLQEEEEPLAG
GKPGADGGSLEAVRLGPSSGLLDVWLEMLDPEVVSSCPDLQLRLLFSRRKGGKQA
QVPSFRPYLLTLFTHQSSWPTLHQCIRVLLGKSREQRFDPSASLDFLWACIHVPRIW
QGRDQRTQPQKRREELVLRVQGP ELISLVELILAE AETRSQDGD TAACSLIQARLPLLL
SCCCGDDSVRKVTEHLSGCIQQWGD SVLGRRCRDLLLQYLQRPEL RVPVPEVLL
HSEGAASSSVCKLDGLIHRFITLLADTSDSRALENRGADASMACRKLAVAHPLLLLRH
LPMIAALLHGRTHLNFQEFRQQNHLSCFLHVLGLLELLQPHVFRSEHQ GALWDCLLS
FIRLLLNYRKSSRHAAAFINKFVQFIHKYITYNAPAAISFLQKHADPLHDLSFDNSDLVM
LKSLLAGLSLPSRDDRTDRGLDEEGEEESSAGSLPLVSVSLFTPLTAAEMAPYMKRL
SRGQTVEDLLEVLSDIDEMSRRRPEILSFFSTNLQRLMSSAECCRNLAFLSLALRSM
QNSPSIAA AFLPTFMYCLGSQDFEVVQTALRNLP EYALLCQEHA AVLLHRAFLVGM Y
GQMDPSAQISEALRILHMEAVMTRTRPLEQKLISEEDLAANDILDYKDDDDKV

Tel: 1-631-559-9269 1-516-512-3133

Email: info@creative-biomart.com Fax: 1-631-938-8127

45-1 Ramsey Road, Shirley, NY 11967, USA

Purity	> 80% as determined by SDS-PAGE and Coomassie blue staining
Stability	Stable for 3 months from receipt of products under proper storage and handling conditions.
Storage	Store at -80 centigrade. Avoid repeated freeze-thaw cycles.
Concentration	50 µg/mL as determined by BCA
Storage Buffer	100 mM glycine, 25 mM Tris-HCl, pH 7.3.

GENE INFORMATION

Gene Name	INTS1 integrator complex subunit 1 [Homo sapiens (human)]
Official Symbol	INTS1
Synonyms	INT1; NET28
Gene ID	26173
mRNA Refseq	NM_001080453
Protein Refseq	NP_001073922
MIM	611345
UniProt ID	Q8N201

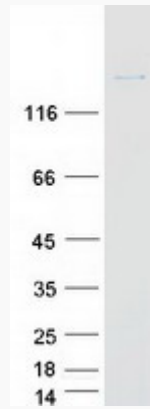
 Tel: 1-631-559-9269 1-516-512-3133

 Email: info@creative-biomart.com  Fax: 1-631-938-8127

 45-1 Ramsey Road, Shirley, NY 11967, USA



SDS-PAGE



☎ Tel: 1-631-559-9269 1-516-512-3133

☎ Email: info@creative-biomart.com ☎ Fax: 1-631-938-8127

☎ 45-1 Ramsey Road, Shirley, NY 11967, USA