

Recombinant Human INTS3 Protein (Thr641-Leu895), C-His tagged

Cat. No. INTS3-3618H **Lot. No.** (See product label)

SPECIFICATION

Product Overview	Recombinant human INTS3/SOSS-A (Thr641-Leu895) protein fused with the C-His tag was expressed in E. coli.
Species	Human
Source	E.coli
ProteinLength	Thr641-Leu895
Molecular Mass	30.76 kDa
Purity	>90 % as determined by SDS-PAGE.
Notes	For research use only.
Storage	Use a manual defrost freezer and avoid repeated freeze thaw cycles. Store at 2 to 8 centigrade for one week. Store at -20 to -80 centigrade for twelve months from the date of receipt.
Storage Buffer	0.01M PBS, pH 7.4, 0.02 % NLS
Reconstitution	Reconstitute in sterile water for a stock solution.
Shipping	In general, proteins are provided as lyophilized powder/frozen liquid. They are

 Tel: 1-631-559-9269 1-516-512-3133

 Email: info@creative-biomart.com  Fax: 1-631-938-8127

 45-1 Ramsey Road, Shirley, NY 11967, USA

shipped out with dry ice/blue ice unless customers require otherwise.

GENE INFORMATION

Gene Name INTS3 integrator complex subunit 3 [Homo sapiens (human)]

Official Symbol INTS3

Synonyms INTS3; integrator complex subunit 3; C1orf60, chromosome 1 open reading frame 60; FLJ21919; INT3; sensor of single strand DNA complex subunit A; SOSS A; RP11-216N14.4; sensor of ssDNA A; SOSS complex subunit A; sensor of ssDNA subunit A; sensor of single-strand DNA complex subunit A; SOSS-A; C1orf60; C1orf193; FLJ44849; RP11-216N14.2; DKFZp686E1950; DKFZp781I1253; DKFZp686O20115;

Gene ID 65123

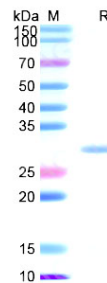
mRNA Refseq NM_023015

Protein Refseq NP_075391

MIM 611347

UniProt ID Q68E01

SDS-PAGE



Tel: 1-631-559-9269 1-516-512-3133

Email: info@creative-biomart.com Fax: 1-631-938-8127

45-1 Ramsey Road, Shirley, NY 11967, USA