

Recombinant Human INTS3 Protein, GST-tagged

Cat. No. INTS3-5088H Lot. No. (See product label)

SPECIFICATION

Product Overview	Human INTS3 full-length ORF (NP_075391.3, 1 a.a. - 1042 a.a.) recombinant protein with GST-tag at N-terminal.
Species	Human
Source	Wheat Germ
Description	INTS3 is a subunit of the Integrator complex, which associates with the C-terminal domain of RNA polymerase II large subunit (POLR2A; MIM 180660) and mediates 3-prime end processing of small nuclear RNAs U1 (RNU1; MIM 180680) and U2 (RNU2; MIM 180690) (Baillat et al., 2005 [PubMed 16239144]).[supplied by OMIM
Molecular Mass	144.4 kDa
AA Sequence	MELQKGKGAASGAAGGGGGAGAGAPGGGRRLLSTSLDAKDELEERLERC MSIVTSMTAGVSEREANDALNAYVCKGLPQHEEICLGLFTLILTEPAQAQKCYRDLAL VSRDGMNIVLNKINQILMEKYLKLQDTCRTQLVWLRELVKSGVLGADGVCMTFMK QIAGGDVTAKNIWLAESVLDILTEQREWVLKSSILIAMAVTYLRLIVDHHGTAQLQAL RQKEVDFCISLLRERFMECLMIGRDLVRLQLNVARIPEFELLWKDIIHNPQALSPQFT GILQLLQSRTSRKFLACRLTPDMETKLLFMTSRVRFVFGQQKRYQDWFQRQYLSTPDS QSLRCDLIRYICGVVHPSNEVLSSDILPRWAIIGWLLTTCTSNVAASNAKLALFYDWLF FSPDKDSIMNIEPAILVMHHSMPKHPAITATLLDFMCRIIPNFYPPLEGHVRQGVFSSL NHIVEKRVLHLAPLFDNPKLDKELRAMLREKFPFCSSPSPVVEVKIEEPVSMEMD NHMSDKDESCYDNAEAAFSDDEEDLNSKGKKREFRFHPIKETVVEEPVDITPYLDQL

Tel: 1-631-559-9269 1-516-512-3133

Email: info@creative-biomart.com Fax: 1-631-938-8127

45-1 Ramsey Road, Shirley, NY 11967, USA

DESLRDKVLQLQKGS DTEAQCEVMQEIVDQVLEEDFDSEQLSVLASCLQELFKAHF
 RGEVLP EEITEESLEESV GKPLYLIFRNL CQM QEDNSSF SLLLDL LSELYQKQPKIGY
 HLLYYLRASKAAAGKM NLYESFAQATQLGDLHTCLMMDMKACQEDDVRLLCHLTPS
 IYTEFPDETLRSGELLNMIVAVIDSAQLQELVCHVMMGNLVMFRKDSVLNLIQSLDW
 ETFEQYCAWQLFLAHNIPL ETIIPILQHLKYKEHPEALSCLLLQLRREK PSEEMVKMVL
 SRPCHPDDQFTTSILRHWCMKHDELLAEHIKSLLIKNNSLPRKRQSLRSSSSKLAQLT
 LEQILEHLDNLRNLNTNTKQNF FSQTPILQALQH VQASCDEAHKMKFSDLFSLAEEYE
 DSSTKPPKSRRKAALSSPRSRKNATQPPNAEEEE S GSSSSASEEEDTKPKPTKRKRKG
 SSAVGSDSD

Applications
 Enzyme-linked Immunoabsorbent Assay
 Western Blot (Recombinant protein)
 Antibody Production
 Protein Array

Notes
 Best use within three months from the date of receipt of this protein.

Storage
 Store at -80 centigrade. Aliquot to avoid repeated freezing and thawing.

Storage Buffer
 50 mM Tris-HCl, 10 mM reduced Glutathione, pH=8.0 in the elution buffer.

GENE INFORMATION

Gene Name
 INTS3 integrator complex subunit 3 [Homo sapiens]

Official Symbol
 INTS3

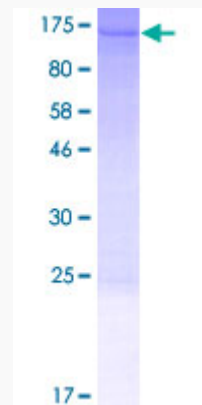
Synonyms
 INTS3; integrator complex subunit 3; C1orf60, chromosome 1 open reading frame 60; FLJ21919; INT3; sensor of single strand DNA complex subunit A; SOSS A; RP11-216N14.4; sensor of ssDNA A; SOSS complex subunit A; sensor of ssDNA subunit A; sensor of single-strand DNA complex subunit A; SOSS-A; C1orf60; C1orf193;

 Tel: 1-631-559-9269 1-516-512-3133


 Email: info@creative-biomart.com  Fax: 1-631-938-8127

 45-1 Ramsey Road, Shirley, NY 11967, USA

FLJ44849; RP11-216N14.2; DKFZp686E1950; DKFZp781I1253; DKFZp686O20115;

Gene ID 65123**mRNA Refseq** NM_023015**Protein Refseq** NP_075391**MIM** 611347**UniProt ID** Q68E01**Quality Control
Testing**

12.5% SDS-PAGE Stained with Coomassie Blue

 Tel: 1-631-559-9269 1-516-512-3133 Email: info@creative-biomart.com  Fax: 1-631-938-8127 45-1 Ramsey Road, Shirley, NY 11967, USA