

## Recombinant Human INTS4 Protein, GST-tagged

Cat. No. INTS4-5087H Lot. No. (See product label)

### SPECIFICATION

<b>Product Overview</b>	Human INTS4 full-length ORF ( NP_291025.3, 1 a.a. - 963 a.a.) recombinant protein with GST-tag at N-terminal.
<b>Species</b>	Human
<b>Source</b>	Wheat Germ
<b>Description</b>	INTS4 is a subunit of the Integrator complex, which associates with the C-terminal domain of RNA polymerase II large subunit (POLR2A; MIM 180660) and mediates 3-prime end processing of small nuclear RNAs U1 (RNU1; MIM 180680) and U2 (RNU2; MIM 180690) (Baillat et al., 2005 [PubMed 16239144]).[supplied by OMIM
<b>Molecular Mass</b>	134.6 kDa
<b>AA Sequence</b>	MAAHLKRVYEEFTKVVQPQEEIATKKLRLTKPSKSAALHIDLCKATSPADALQYLLQ FARKPVEAESVEGVVRILLEHYYKENDPSVRLKIASLLGLLSKTAGFSPDCIMDDAINI LQNEKSHQVLAQLLDTLLAIGTKLPENQAIQMRLVDVACKHLTDTSHGVRNKCLQLL GNLGSLEKSVTKDAEGLAARDVQKIIGDYFSDQDPRVRTAAIKAMLQLHERGLKLHQ TIYNQACKLLSDDYEQVRSAAVQLIWWVVSQLYPESIVPISSNEEIRLVDDAFGKICHM VSDGSWVVRVQAAKLLGSMEQVSSHFLQTLDKKLMSDLRRKRTAHERAKELYSS GEFSSGRKWGDDAPKEEVDTGAVNLIESGACGAFVHGLEDMEYEVRIA AVEALCML AQSSPSFAEKCLDFLDMFNDEIEEVRQLQSIHTMRKISNNITLREDQLDVLAVLEDS SRDIREALHELLCCTNVSTKEGIHLALVELLKNLTKYPTDRDSIWKCLKFLGSRHPTLV LPLVPELLSTHPFFDTAEPDMDDPAYIAVLVLIFNAAKTCPTMPALFSDHTFRHYAYL

 Tel: 1-631-559-9269 1-516-512-3133

 Email: [info@creative-biomart.com](mailto:info@creative-biomart.com)  Fax: 1-631-938-8127

 45-1 Ramsey Road, Shirley, NY 11967, USA

RDSLHLVLPALRLPGRKLVSSAVSPSIIPQEDPSQQFLQQSLERVVSLQHLDPQGAQ  
 ELLEFTIRDQLQRLGELQSELQSELQVADFSATYLRCQLLLIKALQEKLWNVAAPLYLKQSD  
 LASAAAKQIMEETYKMEFMYSGVENKQVVIIHHMRLQAKALQLIVTARTTRGLDPLFG  
 MCEKFLQEVDFFQRYFIADLPHLQDSFVDKLLDLMPRLMTSKPAEVVKILQTMLRQS  
 AFLHLPLPEQIHKASATIIEPAGESDNPLRFTSGLVVALDVDATLEHVQDPQNTVKVQ  
 VLYPDGQAQMIHPKPADFRNPGPGRHRLITQVYLSHTAWTEACQVEVRLLLAYNSS  
 ARIPKCPWMEGGEMSPQVETSIEGTIPFSKPKVKVYIMPKPARR

**Applications**  
 Enzyme-linked Immunoabsorbent Assay  
 Western Blot (Recombinant protein)  
 Antibody Production  
 Protein Array

**Notes**  
 Best use within three months from the date of receipt of this protein.

**Storage**  
 Store at -80 centigrade. Aliquot to avoid repeated freezing and thawing.

**Storage Buffer**  
 50 mM Tris-HCl, 10 mM reduced Glutathione, pH=8.0 in the elution buffer.

## GENE INFORMATION

**Gene Name**  
 INTS4 integrator complex subunit 4 [ Homo sapiens ]

**Official Symbol**  
 INTS4

**Synonyms**  
 INTS4; integrator complex subunit 4; INT4; MGC16733; MST093; MSTP093;

**Gene ID**  
 92105

**mRNA Refseq**  
 NM\_033547

 Tel: 1-631-559-9269 1-516-512-3133

 Email: [info@creative-biomart.com](mailto:info@creative-biomart.com)  Fax: 1-631-938-8127

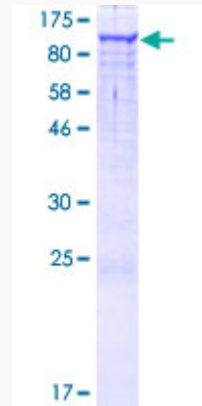
 45-1 Ramsey Road, Shirley, NY 11967, USA

**Protein Refseq** NP\_291025

**MIM** 611348

**UniProt ID** Q96HW7

**Quality Control  
Testing**



12.5% SDS-PAGE Stained with Coomassie Blue

 Tel: 1-631-559-9269 1-516-512-3133

 Email: [info@creative-biomart.com](mailto:info@creative-biomart.com)  Fax: 1-631-938-8127

 45-1 Ramsey Road, Shirley, NY 11967, USA