

Recombinant Human INTS5 Protein, Myc/DDK-tagged, C13 and N15-labeled

Cat. No. INTS5-1407H **Lot. No.** (See product label)

SPECIFICATION

Product Overview	INTS5 MS Standard C13 and N15-labeled recombinant protein (NP_085131) with a C-terminal MYC/DDK tag, was expressed in HEK293 cells.
Species	Human
Source	HEK293
Description	The Integrator complex is a complex that associates with the C-terminal domain of RNA polymerase II large subunit. This complex is brought to U1 and U2 small nuclear RNA genes, where it is involved in the transcription and processing of their transcripts. The protein encoded by this gene represents a subunit of the Integrator complex.
Molecular Mass	107.8 kDa
AA Sequence	MSALCDPPGAPGPPGPAPATHGPAPLSAQELSQEIKAFLTGVDPILGHQLSAREHAR CGLLLLRSLPPARAAVLDHLRGVFDSEVRAHLAALDETPVAGPPHLRPPPPSHVPAG GPGLEDVVQEVQQVLSEFIRANPKAWAPVISAWSIDLMGQLSSTYSGQHQRVPHAT GALNELLQLWMGCRATRTLMDIYVQCLSALIGSCP DACVDALLDTSVQHSPHFDWV VAHIGSSFPGTIIISRVLSCGLKDFCVHGGAGGGAGSSGGSSSQTPSTDPFPGSPAIP AEKRVPKIASVVGILGHLASRHGDSIRRELLRMFHDSL AGGSGGRSGDPSLQATVPF LLQLAVMSPALLGTVSGELVDCLKPPAVLSQLQQHLQGFPREELDNMLNLAVHLVS QASGAGAYRLLQFLVDTAMPASVITTQGLAVPDTVREACDRLIQLLLLHLQKLVHHR

 Tel: 1-631-559-9269 1-516-512-3133

 Email: info@creative-biomart.com  Fax: 1-631-938-8127

 45-1 Ramsey Road, Shirley, NY 11967, USA

GGSPGEGVLGPPPPRRLVPFLDALKNHVGELCGETLRLERKRFLWQHQLLGLLSVY
 TRPSCGPEALGHLLSRARSPEELSLATQLYAGLVVSLSGLLPLAFRSCCLARVHAGTL
 QPPFTARFLRNLALLVGWEQQGGEGPAALGAHFGESASAHLSDLAPLLLHPEEEVA
 EAAASLLAICPPFPSEALSPSPLLGLVRAGVHRFFASLRLHGPPGVASACQLLTRLSQT
 SPAGLKAVLQLLVEGALHRGNTELFGGQVDGDNETLSVVSASLASASLLDTNRRHT
 AAVPGPGGIWSVVFHAGVIGRGLKPPKFVQSRNQEQVIYNTQSLLSLLVHCCSAPGG
 TECGECWGAPILSPEAAKAVAVTLVESVCPDAAGAELAWPPEEHARATVERDLRIG
 RRFREQPLL FELLKLVAAAPPALCYCSVLLRGLLAALLGHWEASRHPDTTHSPWHLE
 ASCTLVAVMAEGSLLPPALGNMHEVFSQLAPFEVRLLLSVWGFLREHGPLPQKFIF
 QSERGRFIRDFSREGGGEGGPHLAVLHLSVLHRNIDRLGLFSGRFQAPSPSTLLRQG
 TSGPTRTRRLEQKLISEEDLAANDILDYKDDDDKV

Purity	> 80% as determined by SDS-PAGE and Coomassie blue staining
Stability	Stable for 3 months from receipt of products under proper storage and handling conditions.
Storage	Store at -80 centigrade. Avoid repeated freeze-thaw cycles.
Concentration	50 µg/mL as determined by BCA
Storage Buffer	100 mM glycine, 25 mM Tris-HCl, pH 7.3.

GENE INFORMATION

Gene Name	INTS5 integrator complex subunit 5 [Homo sapiens (human)]
Official Symbol	INTS5
Synonyms	INTS5; integrator complex subunit 5; KIAA1698; INT5;

Gene ID 80789

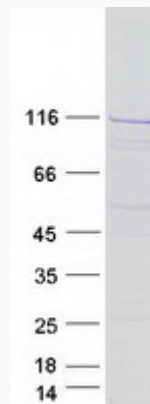
mRNA Refseq NM_030628

Protein Refseq NP_085131

MIM 611349

UniProt ID Q6P9B9

SDS-PAGE



Tel: 1-631-559-9269 1-516-512-3133

Email: info@creative-biomart.com Fax: 1-631-938-8127

45-1 Ramsey Road, Shirley, NY 11967, USA