

Recombinant Human INTS5 Protein, GST-tagged

Cat. No. INTS5-5086H Lot. No. (See product label)

SPECIFICATION

Product Overview	Human INTS5 full-length ORF (NP_085131.1, 1 a.a. - 1019 a.a.) recombinant protein with GST-tag at N-terminal.
Species	Human
Source	Wheat Germ
Description	INTS5 is a subunit of the Integrator complex, which associates with the C-terminal domain of RNA polymerase II large subunit (POLR2A; MIM 180660) and mediates 3-prime end processing of small nuclear RNAs U1 (RNU1; MIM 180680) and U2 (RNU2; MIM 180690) (Baillat et al., 2005 [PubMed 16239144]).[supplied by OMIM
Molecular Mass	134.4 kDa
AA Sequence	MSALCDPPGAPGPPGPAPATHGPAPLSAQELSQEIKAFLTGVDPILGHQLSAREHAR CGLLLLRSLPPARAAVLDHLRGVFDSEVRAHLAALDETPVAGPPHLRPPPPSHVPAG GPGLEDVVQEVQQVLSEFIRANPKAWAPVISAWSIDLMGQLSSTYSQGHRVPHAT GALNELLQLWMGCRATRRLMDIYVQCLSALIGSCPACVDALLDTSVQHSPHFDWV VAHIGSSFPGTIISRVLSCGLKDFCVHGGAGGGAGSSGGSSSQTPSTDPFPGSPAIP AEKRVPKIASVVGILGHLASRHGDSIRRELLRMFHDSLGGSGGRSGDPSLQATVPF LLQLAVMSPALLGTVSGELVDCLKPPAVLSQLQQHLQGFPREELDNMLNLAVHLVS QASGAGAYRLLQFLVDTAMPASVITTQGLAVPDTVREACDRLIQLLLLHLQKLVHHR GGSPGEGVLGPPPPRLLVFLDALKNHV GELCGETLRLERKRFLWQHLLGLLSVY TRPSCGPEALGHLLSRARSPEELSLATQLYAGLVVSLSGLLPLAFRSCLARVHAGTL

 Tel: 1-631-559-9269 1-516-512-3133

 Email: info@creative-biomart.com  Fax: 1-631-938-8127

 45-1 Ramsey Road, Shirley, NY 11967, USA

QPPFTARFLRNLALLVGWEQQGGEGPAALGAHFGESASAHLSDLAPLLLHPREEVA
 EAAASLLAICPPFPSEALSPSPLLGLVRAGVHRFFASLRLHGPPGVASACQLLTRLSQT
 SPAGLKAVLQLLVEGALHRGNTELFGGQVDGDNETLSVVSASLASASLLDTNRRHT
 AAVPGPGGIWSVFHAGVIGRGLKPPKFVQSRNQEQVIYNTQSLLSLLVHCCSAPGG
 TECGECWGAPILSPEAAKAVAVTLVESVCPDAAGAELAWPPEEHARATVERDLRIG
 RRFREQPLL FELLKLVA AAPPALCYCSVLLRGLLAALLGHWEASRHPDTHSPWHLE
 ASCTLVAVMAEGSLLPPALGNMHEVFSQLAPFEVRLLLSVWGFLREHGPLPQKFIF
 QSERGRFIRDFSREGGGEGGPHLAVLHLSVLHRNIDRLGLFSGRFQAPSPSTLLRQG
 T

Applications
 Enzyme-linked Immunoabsorbent Assay
 Western Blot (Recombinant protein)
 Antibody Production
 Protein Array

Notes Best use within three months from the date of receipt of this protein.

Storage Store at -80 centigrade. Aliquot to avoid repeated freezing and thawing.

Storage Buffer 50 mM Tris-HCl, 10 mM reduced Glutathione, pH=8.0 in the elution buffer.

GENE INFORMATION

Gene Name [INTS5 integrator complex subunit 5 \[Homo sapiens \]](#)

Official Symbol [INTS5](#)

Synonyms INTS5; integrator complex subunit 5; KIAA1698; INT5;

Gene ID [80789](#)

 Tel: 1-631-559-9269 1-516-512-3133

 Email: info@creative-biomart.com  Fax: 1-631-938-8127

 45-1 Ramsey Road, Shirley, NY 11967, USA

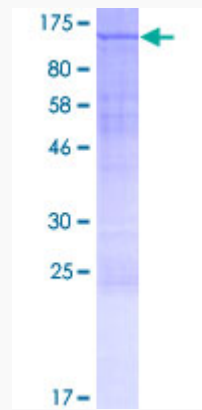
mRNA Refseq [NM_030628](#)

Protein Refseq [NP_085131](#)

MIM [611349](#)

UniProt ID [Q6P9B9](#)

**Quality Control
Testing**



12.5% SDS-PAGE Stained with Coomassie Blue

 Tel: 1-631-559-9269 1-516-512-3133

 Email: info@creative-biomart.com  Fax: 1-631-938-8127

 45-1 Ramsey Road, Shirley, NY 11967, USA