

## Recombinant Human INTU Protein, GST-tagged

Cat. No. INTU-5083H Lot. No. (See product label)

### SPECIFICATION

<b>Product Overview</b>	Human INTU full-length ORF ( ENSP00000296461, 1 a.a. - 408 a.a.) recombinant protein with GST-tag at N-terminal.
<b>Species</b>	Human
<b>Source</b>	Wheat Germ
<b>Description</b>	This locus includes two alternatively spliced read-through transcript variants which align to the INS gene in the 5' region and to the IGF2 gene in the 3' region. One transcript is predicted to encode a protein which shares the N-terminus with the INS protein but has a distinct and longer C-terminus, whereas the other transcript is a candidate for nonsense-mediated decay (NMD). The transcripts are imprinted and are paternally expressed in the limb and eye. [provided by RefSeq, Jul 2008]
<b>Molecular Mass</b>	72.6 kDa
<b>AA Sequence</b>	MASVASCDSRPSSDELPGDPSSQEEDEDYDFEDRVSDSGSYSSASSDYDDLEPEW LDSVQKNGELFYLELSEDEEESLLPETPTVNHVRFSENEIIIEDDYKERKKYEPKLLKQF TKILRRKRLLPKRCNKNSNDNGPVSILKHQSNQKTGVIVQQRKYKDVNVVYVNPCKLT VIKAKEQLKLLLEVLVGIIHQTKWSWRRTGKQGDGERLVVHGLLPGGSAMKSGQVLIG DVLVAVNDVDVTTENIERVLSCIPGPMQVKLTFENAYDVKRETSHPRQKKTQSNTSD LVKLLWGEEVEGIQQSGLNTPHIIMYLTQLDSETSKEEQEILYHYPMSEASQKLKSV RGIFLTLCDMLENVTGTQVTSSSLLLNGKQIHVAYWKESDKLLLIGLPAAEIELPSSAH THGERN

 Tel: 1-631-559-9269 1-516-512-3133

 Email: [info@creative-biomart.com](mailto:info@creative-biomart.com)  Fax: 1-631-938-8127

 45-1 Ramsey Road, Shirley, NY 11967, USA

<b>Applications</b>	Enzyme-linked Immunoabsorbent Assay Western Blot (Recombinant protein) Antibody Production Protein Array
<b>Notes</b>	Best use within three months from the date of receipt of this protein.
<b>Storage</b>	Store at -80 centigrade. Aliquot to avoid repeated freezing and thawing.
<b>Storage Buffer</b>	50 mM Tris-HCl, 10 mM reduced Glutathione, pH=8.0 in the elution buffer.

## GENE INFORMATION

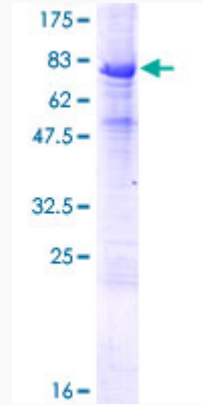
<b>Gene Name</b>	INTU inturned planar cell polarity protein [ Homo sapiens (human) ]
<b>Official Symbol</b>	INTU
<b>Synonyms</b>	INTU; inturned planar cell polarity protein; INT; PDZD6; PDZK6; protein inturned; PDZ domain containing 6; PDZ domain-containing protein 6; homolog of inturned; inturned planar cell polarity effector homolog
<b>Gene ID</b>	27152
<b>mRNA Refseq</b>	NM_015693
<b>Protein Refseq</b>	NP_056508
<b>MIM</b>	610621
<b>UniProt ID</b>	Q9ULD6

 Tel: 1-631-559-9269 1-516-512-3133

 Email: [info@creative-biomart.com](mailto:info@creative-biomart.com)  Fax: 1-631-938-8127

 45-1 Ramsey Road, Shirley, NY 11967, USA

**Quality Control  
Testing**



12.5% SDS-PAGE Stained with Coomassie Blue

 Tel: 1-631-559-9269 1-516-512-3133

 Email: [info@creative-biomart.com](mailto:info@creative-biomart.com)  Fax: 1-631-938-8127

 45-1 Ramsey Road, Shirley, NY 11967, USA