

Recombinant Human IPCEF1 Protein, Myc/DDK-tagged, C13 and N15-labeled

Cat. No. IPCEF1-1097H Lot. No. (See product label)

SPECIFICATION

| | |
|-------------------------|--|
| Product Overview | IPCEF1 MS Standard C13 and N15-labeled recombinant protein (NP_056368) with a C-terminal MYC/DDK tag, was expressed in HEK293 cells. |
| Species | Human |
| Source | HEK293 |
| Description | Enhances the promotion of guanine-nucleotide exchange by PSCD2 on ARF6 in a concentration-dependent manner. |
| Molecular Mass | 49 kDa |
| AA Sequence | <p>MTSYMAIDGSALVPLRQKPRRKTQGFLTMSRRRISCKDLGHADCQGWLYKKKEKG SFLSNKWKKFWVILKGSSLYWYSNQMAEKADGFVNLPDFTVERASECKKKHAFKIS HPQIKTFYFAAENVQEMNVWLNKLGSAVIHQESTTKDEECYSESEQEDPEIAAETPP PPHASQTQSLTAQQASSSSPSLSGTSYSFSSLENTVKTPSSFPSSLSKERQSLPDTV NSLSAAEDEGQPITFAVQVHSPVPSEAGIHKALENSFVTSESGFLNSLSSDDTSSLSS NHDHLTVDPKPAAGSKIMDKKEETKVSEDDMEKLYKSLEQASLSPLGDRRPSTKKEK RKSFVKRCKNPSINEKLHKIRTLNSTLKCKEHDLAMINQLLDDPKLTARKYREWKVM NTLLIQDIYQQQRASPAPDDTDDTPQELKKSPSSPSVENSITRTRPLEQKLISEEDLA ANDILDYKDDDDKV</p> |
| Purity | > 80% as determined by SDS-PAGE and Coomassie blue staining |

 Tel: 1-631-559-9269 1-516-512-3133

 Email: info@creative-biomart.com  Fax: 1-631-938-8127

 45-1 Ramsey Road, Shirley, NY 11967, USA

| | |
|-----------------------|--|
| Stability | Stable for 3 months from receipt of products under proper storage and handling conditions. |
| Storage | Store at -80 centigrade. Avoid repeated freeze-thaw cycles. |
| Concentration | 50 µg/mL as determined by BCA |
| Storage Buffer | 100 mM glycine, 25 mM Tris-HCl, pH 7.3. |

GENE INFORMATION

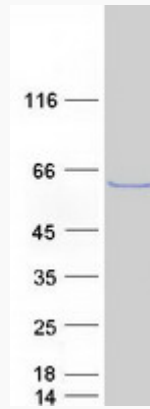
| | |
|------------------------|---|
| Gene Name | IPCEF1 interaction protein for cytohesin exchange factors 1 [Homo sapiens (human)] |
| Official Symbol | IPCEF1 |
| Synonyms | IPCEF1; interaction protein for cytohesin exchange factors 1; interactor protein for cytohesin exchange factors 1; KIAA0403; phosphoinositide binding protein PIP3 E; PIP3 E; phosphoinositide binding protein PIP3-E; phosphoinositide-binding protein PIP3-E; interaction protein for cytohesin exchange factors 1 Interaction protein for cytohesin exchange factors 1; PIP3-E; RP3-402L9.2; |
| Gene ID | 26034 |
| mRNA Refseq | NM_015553 |
| Protein Refseq | NP_056368 |
| UniProt ID | Q8WWN9 |

 Tel: 1-631-559-9269 1-516-512-3133

 Email: info@creative-biomart.com  Fax: 1-631-938-8127

 45-1 Ramsey Road, Shirley, NY 11967, USA

SDS-PAGE



 Tel: 1-631-559-9269 1-516-512-3133

 Email: info@creative-biomart.com  Fax: 1-631-938-8127

 45-1 Ramsey Road, Shirley, NY 11967, USA