

# Recombinant Human IPMK Protein, Myc/DDK-tagged, C13 and N15-labeled

**Cat. No.** IPMK-705H    **Lot. No.** (See product label)

## SPECIFICATION

<b>Product Overview</b>	IPMK MS Standard C13 and N15-labeled recombinant protein (NP_689416) with a C-terminal MYC/DDK tag, was expressed in HEK293 cells.
<b>Species</b>	Human
<b>Source</b>	HEK293
<b>Description</b>	This gene encodes a member of the inositol phosphokinase family. The encoded protein has 3-kinase, 5-kinase and 6-kinase activities on phosphorylated inositol substrates. The encoded protein plays an important role in the biosynthesis of inositol 1,3,4,5,6-pentakisphosphate, and has a preferred 5-kinase activity. This gene may play a role in nuclear mRNA export. Pseudogenes of this gene are located on the long arm of chromosome 13 and the short arm of chromosome 19.
<b>Molecular Mass</b>	47.2 kDa
<b>AA Sequence</b>	MATEPPSPLRVEAPGPPEMRTSPAIESTPEGTPQPAGGRLRFLNGCVPLSHQVAGH MYGKDKVGLQHPDGTVLKQLQPPPRGPRELEFYNMVYAADCDFGVLLLELRKYLPK YYGIWSPPTAPNDLYLKLEDVTHKFNKPCIMDVKIGQKSYDPFASSEKIQQQVSKYPL MEEIGFLVLGMRVYHVHSDSYETENQHYSRSLTKETIKDGVSRRFFHNGYCLRKDAV AASIQKIEKILQWFENQKQLNFYASSLLFVYEGSSQPTTTKLNDRTLAEKFLSKGQLS DTEVLEYNNNFHVLSSSTANGKIESSVGKSLSKMYARHRKIYTKKHHSQTSKVENLE QDNGWKSMSQEHLNGNVLSQLEKVFYHLPTGCQEIAEVEVRMIDFAHVFPSTIDE

 Tel: 1-631-559-9269    1-516-512-3133

 Email: [info@creative-biomart.com](mailto:info@creative-biomart.com)     Fax: 1-631-938-8127

 45-1 Ramsey Road, Shirley, NY 11967, USA



GYVYGLKHLISVLRSLDNRTRPLEQKLISEEDLAANDILDYKDDDDKV

**Purity** > 80% as determined by SDS-PAGE and Coomassie blue staining

**Stability** Stable for 3 months from receipt of products under proper storage and handling conditions.

**Storage** Store at -80 centigrade. Avoid repeated freeze-thaw cycles.

**Concentration** 50 µg/mL as determined by BCA

**Storage Buffer** 100 mM glycine, 25 mM Tris-HCl, pH 7.3.

## GENE INFORMATION

**Gene Name** [IPMK inositol polyphosphate multikinase \[ Homo sapiens \(human\) \]](#)

**Official Symbol** [IPMK](#)

**Synonyms** IPMK; inositol polyphosphate multikinase; inositol 1,3,4,6-tetrakisphosphate 5-kinase;

**Gene ID** [253430](#)

**mRNA Refseq** [NM\\_152230](#)

**Protein Refseq** [NP\\_689416](#)

**MIM** [609851](#)

**UniProt ID** [Q8NFU5](#)

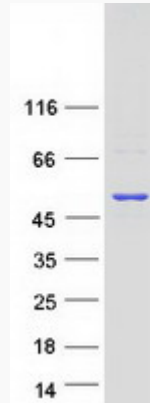
Tel: 1-631-559-9269 1-516-512-3133

Email: [info@creative-biomart.com](mailto:info@creative-biomart.com) Fax: 1-631-938-8127

45-1 Ramsey Road, Shirley, NY 11967, USA



SDS-PAGE



Tel: 1-631-559-9269 1-516-512-3133

Email: [info@creative-biomart.com](mailto:info@creative-biomart.com) Fax: 1-631-938-8127

45-1 Ramsey Road, Shirley, NY 11967, USA