

Recombinant Human IPO13 Protein, GST-tagged

Cat. No. IPO13-5077H Lot. No. (See product label)

SPECIFICATION

Product Overview	Human IPO13 full-length ORF (NP_055467.2, 1 a.a. - 963 a.a.) recombinant protein with GST-tag at N-terminal.
Species	Human
Source	Wheat Germ
Description	This gene encodes a member of the importin-beta family of nuclear transport proteins. The encoded protein mediates the import of specific cargo proteins from the cytoplasm to the nucleus and is dependent on the Ras-related nuclear protein-GTPase system. The encoded protein is also involved in nuclear export of the eukaryotic translation initiation factor 1A
Molecular Mass	134.6 kDa
AA Sequence	MERREEQPGAAGAGAAPALDFTVENVEKALHQLYYDPNIENKNLAQKWLMAQVS PQAWHFSWQLLPDKVPEIQYFGASALHIKISRYWSDIPTDQYESLKAQLFTQITRFA SGSKIVLTRLVALASLALSMMPDAWPCAVADMVRLFQAEDSPVDGQGRCLALLEL LTVLPPEEFQTSRLPQYRKGLVRTSLAVECGAVFPLLEQLLQQPSSPSCVRQKVLKCF SSWVQLEVPLQDCEALIQAFAALQDSELDSSVEAIVNAISQPDAQRYVNTLLKLIPL VLGLQEQLRQAVQNGDMETSHGICRIAVALGENHSRALLDQVEHWQSFLALVNMIM FCTGIPGHYPVNETTSSLTLTFWYTLQDDILSFEAEKQAVYQQVYRPVYFQLVDVLL HKAQFPSDEEYGFWSSDEKEQFRIYRVDISDTLMYVYEMLGAELLSNLYDKLGRLLT SSEEPYSWQHTEALLYGFQSAIETIDVNYSDVVPGLIGLIPRISISNVQLADTVMFTIGA

 Tel: 1-631-559-9269 1-516-512-3133

 Email: info@creative-biomart.com  Fax: 1-631-938-8127

 45-1 Ramsey Road, Shirley, NY 11967, USA

LSEWLADHPVMINSVLPLVLHALGNPELSVSSVSTLKKICRECKYDLPPYAANIVAVS
 QDVLMKQIHKTSQCMWLMQALGFLLSALQVEEILKNLHSLISPYIQQLEKLAAEIPNP
 SNKLAIVHILGLLSNLFTTLDISHHEDDHEGPELRKLPVPQGPNPVVVVLQQVFQLIQK
 VLSKWLNDAAQVVEAVCAIFEKSVKTLDDFAPMVPQLCEMLGRMYSTIPQASALDLT
 RQLVHIFAHEPAHFPPIEALFLLVTSVTLTLFQQGPRDHPDIVDSFMQLLAQALKRKP
 DLFLCERLDVKSQVFCVAVLALKFPEAPTVMKASCQGFTELLPRCGEVESVGKVVQEDG
 RMLLIIVLEAIGGQASRSLMDCFADILFALNKHCFSLLSMWIKEALQPPGFPSARLSP
 EQKDTFSQQILRERVNKRVRKEMVKEFTLLCRGLHGTDYTADY

Applications

Enzyme-linked Immunoabsorbent Assay
 Western Blot (Recombinant protein)
 Antibody Production
 Protein Array

Notes

Best use within three months from the date of receipt of this protein.

Storage

Store at -80 centigrade. Aliquot to avoid repeated freezing and thawing.

Storage Buffer

50 mM Tris-HCl, 10 mM reduced Glutathione, pH=8.0 in the elution buffer.

GENE INFORMATION

Gene Name

IPO13 importin 13 [Homo sapiens]

Official Symbol

IPO13

Synonyms

LGL2; IMP13; KAP13; RANBP13; IPO13; importin 13

Gene ID

9670

mRNA Refseq

NM_014652

 Tel: 1-631-559-9269 1-516-512-3133

 Email: info@creative-biomart.com  Fax: 1-631-938-8127

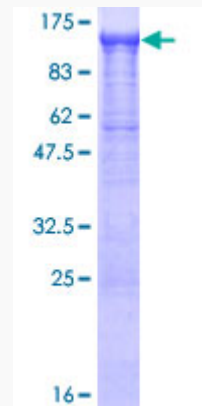
 45-1 Ramsey Road, Shirley, NY 11967, USA

Protein Refseq NP_055467

MIM 610411

UniProt ID O94829

**Quality Control
Testing**



12.5% SDS-PAGE Stained with Coomassie Blue

 Tel: 1-631-559-9269 1-516-512-3133

 Email: info@creative-biomart.com  Fax: 1-631-938-8127

 45-1 Ramsey Road, Shirley, NY 11967, USA