

# Recombinant Human IPO4 Protein, MYC/DDK-tagged, C13 and N15-labeled

**Cat. No.** IPO4-293H    **Lot. No.** (See product label)

## SPECIFICATION

<b>Product Overview</b>	IPO4 MS Standard C13 and N15-labeled recombinant protein (NP_078934) with a C-terminal MYC/DDK tag, was expressed in HEK293 cells.
<b>Species</b>	Human
<b>Source</b>	HEK293
<b>Description</b>	Functions in nuclear protein import as nuclear transport receptor. Serves as receptor for nuclear localization signals (NLS) in cargo substrates. Is thought to mediate docking of the importin/substrate complex to the nuclear pore complex (NPC) through binding to nucleoporin and the complex is subsequently translocated through the pore by an energy requiring, Ran-dependent mechanism. At the nucleoplasmic side of the NPC, Ran binds to the importin, the importin/substrate complex dissociates and importin is re-exported from the nucleus to the cytoplasm where GTP hydrolysis releases Ran. The directionality of nuclear import is thought to be conferred by an asymmetric distribution of the GTP- and GDP-bound forms of Ran between the cytoplasm and nucleus. Mediates the nuclear import of RPS3A. In vitro, mediates the nuclear import of human cytomegalovirus UL84 by recognizing a non-classical NLS.
<b>Molecular Mass</b>	118.7 kDa
<b>AA Sequence</b>	MESAGLEQLLRELLLPDTERIRRATEQLQIVLRAPAALPALCDLLASAADPQIRQFAA VLTRRRRLNTRWRRLAAEQRESLKSLILTALQRETEHCVSLSLAQLSATIFRKEGLEAW

 Tel: 1-631-559-9269    1-516-512-3133

 Email: [info@creative-biomart.com](mailto:info@creative-biomart.com)     Fax: 1-631-938-8127

 45-1 Ramsey Road, Shirley, NY 11967, USA

PQLLQLLQHSTHSPHSPEREMGLLLLSVVVTSRPEAFQPHHRELLRLLNETLGEVGS  
 PGLLFYSLRTLTTMAPYLSTEDVPLARMLVPKLIMAMQTLIPIDEAKACEALEALDELL  
 ESEVPVITPYLSEVLTFCLEVARNVALGNAIRIRILCCLTFLVKVSKALLKNRLLPPLL  
 HTLFPIVAAEPPPGQLDPEDQDSEEEEEELEIELMGETPKHFAVQVVDMLALHLPPEKL  
 CPQLMPMLEEALRSESPYQRKAGLLVLAVLSDGAGDHIRQRLPPLLQIVCKGLEDP  
 SQVVRNAALFALGQFSENLQPHISSYSREVMPLLLAYLKSVPPLGHTHHLAKACYALE  
 NFVENLGPVKVQPYLPELMECMLQLLRNPSSPRAKELAVSALGAIATAAQASLLPYFP  
 AIMEHLREFLLTGREDLQPVIQISLETGLVLRARAVGEPMRPLAECCQLGLGLCDQV  
 DDPDLRRCTYSLFAALSGLMGEGLAPHLEQITTLMLLSLRSTEGIVPQYDGSSSFLLF  
 DDESDGEEEEELMDEDVEEEDDSEISGYSVENAFFDEKEDTCAAVGEISVNTSVAF  
 PYMESVFEEVFKLLECPHLNVRKAAHEALGQFCCALHKACQSCPSEPNTAALQAAL  
 ARVVPSYMQAVNRERERQVVMVAVLEALTGVLRSRSGTLTKPPGRLAELCGVLKAVL  
 QRKTACQDTDEEEEEEDDDQAEYDAMLLEHAGEAIPALAAAAGGDSFAPFFAGFLP  
 LLVCKTKQGCTVAEKSFVAVGTLAETIQGLGAASAQFVSRLLPVLLSTAQEAADPEVRS  
 NAIFGMGVLAEHGGHPAQEHFPKLLGLLFLLARERHDRVDRNICGALARLLMASPT  
 RKPEPQVLAALLHALPLKEDLEEWVTIGRFLFSFLYQSSPDQVIDVAPELLRICSLILAD  
 NKIPPDTKAALLLTLFLAKQHTDSFQAALGSLPVDKAQELQAVLGLSTRTRPLEQKLI  
 SEEDLAANDILDYKDDDDKV

**Purity** > 80% as determined by SDS-PAGE and Coomassie blue staining

**Stability** Stable for 3 months from receipt of products under proper storage and handling conditions.


**Storage** Store at -80 centigrade. Avoid repeated freeze-thaw cycles.

**Concentration** 50 µg/mL as determined by BCA

**Storage Buffer** 100 mM glycine, 25 mM Tris-HCl, pH 7.3.

 Tel: 1-631-559-9269 1-516-512-3133

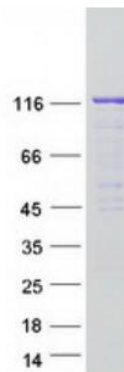
 Email: [info@creative-biomart.com](mailto:info@creative-biomart.com)  Fax: 1-631-938-8127

 45-1 Ramsey Road, Shirley, NY 11967, USA

## GENE INFORMATION

<b>Gene Name</b>	IPO4 importin 4 [ Homo sapiens (human) ]
<b>Official Symbol</b>	IPO4
<b>Synonyms</b>	IPO4; importin 4; importin-4; FLJ23338; Imp4; imp4b; ranBP4; importin-4b; ran-binding protein 4; MGC131665;
<b>Gene ID</b>	79711
<b>mRNA Refseq</b>	NM_024658
<b>Protein Refseq</b>	NP_078934
<b>UniProt ID</b>	Q8TEX9

### SDS-PAGE



 Tel: 1-631-559-9269 1-516-512-3133

 Email: [info@creative-biomart.com](mailto:info@creative-biomart.com)  Fax: 1-631-938-8127

 45-1 Ramsey Road, Shirley, NY 11967, USA