

## Recombinant Human IPO8 Protein, GST-tagged

Cat. No. IPO8-5075H Lot. No. (See product label)

### SPECIFICATION

<b>Product Overview</b>	Human IPO8 partial ORF ( NP_006381.2, 949 a.a. - 1037 a.a.) recombinant protein with GST-tag at N-terminal.
<b>Species</b>	Human
<b>Source</b>	Wheat Germ
<b>Description</b>	The importin-alpha/beta complex and the GTPase Ran mediate nuclear import of proteins with a classical nuclear localization signal. The protein encoded by this gene is a member of a class of approximately 20 potential Ran targets that share a sequence motif related to the Ran-binding site of importin-beta. This protein binds to the nuclear pore complex and, along with RanGTP and RANBP1, inhibits the GAP stimulation of the Ran GTPase. [provided by RefSeq]
<b>Molecular Mass</b>	35.53 kDa
<b>AA Sequence</b>	LDLDNSVDEYQFFTQALITVQSRDAAWYQLLMAPLSEDQRTALQEYVTLAEHRRTV AEAKKKIEQQGGFTFENKGVLSAFNFGTVPSNN
<b>Applications</b>	Enzyme-linked Immunoabsorbent Assay Western Blot (Recombinant protein) Antibody Production Protein Array
<b>Notes</b>	Best use within three months from the date of receipt of this protein.

 Tel: 1-631-559-9269 1-516-512-3133

 Email: [info@creative-biomart.com](mailto:info@creative-biomart.com)  Fax: 1-631-938-8127

 45-1 Ramsey Road, Shirley, NY 11967, USA

**Storage** Store at -80 centigrade. Aliquot to avoid repeated freezing and thawing.

**Storage Buffer** 50 mM Tris-HCl, 10 mM reduced Glutathione, pH=8.0 in the elution buffer.

## GENE INFORMATION

**Gene Name** IPO8 importin 8 [ Homo sapiens ]

**Official Symbol** IPO8

**Synonyms** IPO8; importin 8; RAN binding protein 8 , RANBP8; importin-8; IMP8; imp8; RAN binding protein 8; ran-binding protein 8; RANBP8; FLJ21954; FLJ26580;

**Gene ID** 10526

**mRNA Refseq** NM\_001190995

**Protein Refseq** NP\_001177924

**MIM** 605600

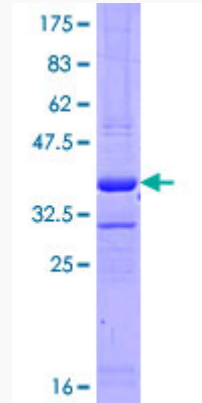
**UniProt ID** O15397

 Tel: 1-631-559-9269 1-516-512-3133

 Email: [info@creative-biomart.com](mailto:info@creative-biomart.com)  Fax: 1-631-938-8127

 45-1 Ramsey Road, Shirley, NY 11967, USA

**Quality Control  
Testing**



12.5% SDS-PAGE Stained with Coomassie Blue

 Tel: 1-631-559-9269 1-516-512-3133

 Email: [info@creative-biomart.com](mailto:info@creative-biomart.com)  Fax: 1-631-938-8127

 45-1 Ramsey Road, Shirley, NY 11967, USA