

Recombinant Human IPPK Protein, GST-Tagged

Cat. No. IPPK-1310H Lot. No. (See product label)

SPECIFICATION

Product Overview	Human C9orf12 partial ORF (NP_073592, 391 a.a. - 491 a.a.) recombinant protein with GST-tag at N-terminal.
Species	Human
Source	Wheat Germ
Description	The protein encoded by this gene is a kinase that phosphorylates position 2 of inositol-1,3,4,5,6-pentakisphosphate to form inositol-1,2,3,4,5,6-hexakisphosphate (InsP6). InsP6 has a variety of functions, including stimulation of DNA repair, endocytosis, and mRNA export. [provided by RefSeq, Nov 2010]
Molecular Mass	36.85 kDa
AA Sequence	VQQYRVAMTAKDCSIMIALSPCLQDASSDQRPVVPSSRSRFAFSVSVLDDLKPYES IPHQYKLDGKIVNYYSKTVRAKDNAVMSTRFKESEDCTLVLHKV
Applications	Enzyme-linked Immunoabsorbent Assay Western Blot (Recombinant protein) Antibody Production Protein Array
Storage	Store at -80 centigrade. Aliquot to avoid repeated freezing and thawing.
Storage Buffer	50 mM Tris-HCl, 10 mM reduced Glutathione, pH=8.0 in the elution buffer.

 Tel: 1-631-559-9269 1-516-512-3133

 Email: info@creative-biomart.com  Fax: 1-631-938-8127

 45-1 Ramsey Road, Shirley, NY 11967, USA

GENE INFORMATION

Gene Name IPPK inositol 1,3,4,5,6-pentakisphosphate 2-kinase [Homo sapiens]

Official Symbol IPPK

Synonyms IPPK; inositol 1,3,4,5,6-pentakisphosphate 2-kinase; C9orf12, chromosome 9 open reading frame 12; inositol-pentakisphosphate 2-kinase; FLJ13163; INSP5K2; IP5K; IPK1; IPK1 homolog; insP5 2-kinase; ins(1,3,4,5,6)P5 2-kinase; bA476B13.1 (novel protein); C9orf12; bA476B13.1; KIAA0699;

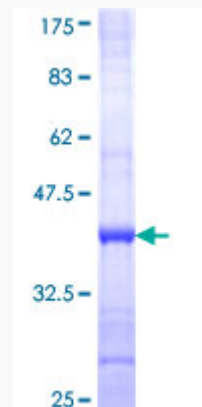
Gene ID 64768

mRNA Refseq NM_022755

Protein Refseq NP_073592

UniProt ID Q9H8X2

Quality Control Testing



12.5% SDS-PAGE Stained with Coomassie Blue.

 Tel: 1-631-559-9269 1-516-512-3133

 Email: info@creative-biomart.com  Fax: 1-631-938-8127

 45-1 Ramsey Road, Shirley, NY 11967, USA