

Recombinant Human IQCC Protein, GST-tagged

Cat. No. IQCC-5069H Lot. No. (See product label)

SPECIFICATION

Product Overview	Human IQCC full-length ORF (AAH98317.1, 1 a.a. - 466 a.a.) recombinant protein with GST-tag at N-terminal.
Species	Human
Source	Wheat Germ
Description	IQCC (IQ Motif Containing C) is a Protein Coding gene.
Molecular Mass	79.4 kDa
AA Sequence	MEPELLVRKVSALQACVRGFLVRRQFQSLRAEYEAIVREVEGDLGTLQWTEGRIPR PRFLPEKAKSHQTKAGDRVANPEQGLWNHFPCEESEGEATWEEMVLKKSCESS ANQGSLCRDHSSWLQMKQNRKPSQEKTRDTRMENPEATDQRLPHSQPQLQELQ YHRSHLAMELLWLQQAINSRKEYLLLLKQTLRSPEAGPIREEPRVFLEHGQACERDQ SQPSAPLEDQSYRDRTTGELEQEDDSCHRVKSPHRSPGSLATTQKNIAGAKCREPC YSKSGPPSSIPSNSQALGDRLTKGPDDGRQTFGGTCLLQMKILEDQTPRGLKPRNH CPRKSRTQLSALYEDSNIKEMSPRKLHDHKEPDCRTVRTQELGLSEDHIIWDGTLGGP EHSVLDLWRTKPPKGQAPTDRSSRDGTSNEPSHEGQKKQRTIPWRSKSPPEILSSTK AGCTGEEQWRGRPWKTEPPG
Applications	Enzyme-linked Immunoabsorbent Assay Western Blot (Recombinant protein) Antibody Production Protein Array

 Tel: 1-631-559-9269 1-516-512-3133

 Email: info@creative-biomart.com  Fax: 1-631-938-8127

 45-1 Ramsey Road, Shirley, NY 11967, USA

Notes	Best use within three months from the date of receipt of this protein.
Storage	Store at -80 centigrade. Aliquot to avoid repeated freezing and thawing.
Storage Buffer	50 mM Tris-HCl, 10 mM reduced Glutathione, pH=8.0 in the elution buffer.

GENE INFORMATION

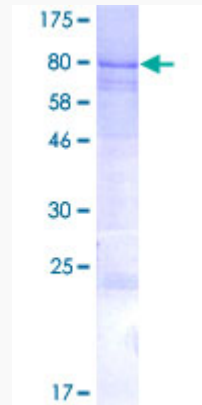
Gene Name	IQCC IQ motif containing C [Homo sapiens]
Official Symbol	IQCC
Synonyms	IQCC ; IQ motif containing C ; IQ domain-containing protein C ; FLJ10547 ; RP4-622L5.6 ; MGC120341 ;
Gene ID	55721
mRNA Refseq	NM_001160042
Protein Refseq	NP_001153514
UniProt ID	Q4KMZ1

 Tel: 1-631-559-9269 1-516-512-3133

 Email: info@creative-biomart.com  Fax: 1-631-938-8127

 45-1 Ramsey Road, Shirley, NY 11967, USA

**Quality Control
Testing**



12.5% SDS-PAGE Stained with Coomassie Blue

 Tel: 1-631-559-9269 1-516-512-3133

 Email: info@creative-biomart.com  Fax: 1-631-938-8127

 45-1 Ramsey Road, Shirley, NY 11967, USA