

Recombinant Human IQCD Protein, GST-tagged

Cat. No. IQCD-5068H Lot. No. (See product label)

SPECIFICATION

Product Overview	Human IQCD full-length ORF (NP_612460.1, 1 a.a. - 347 a.a.) recombinant protein with GST-tag at N-terminal.
Species	Human
Source	Wheat Germ
Description	IQCD (IQ Motif Containing D) is a Protein Coding gene.
Molecular Mass	66.5 kDa
AA Sequence	MALDILAMAPLYQAPAINRIGPKTDPSKRPADPLKPLVLSRTKLTIEAKRIMSILDEAI YKVELVTLLSYVASNREDMEGMLGEDVMRAVREHEDLCQVLLENVRLKEKERQL QEQKEAEEEGWLRDRLLSIELQKSSLSPMLQQIKDSTKNVLRLLLSNPQAARLLQMQ TQGRSAEAQNFDLSIELRGFLFEKLLTSPMEARDKAQFLQDISRQNSNNQQIIDTLE KELAERMKNRNAEEEELELDVAHVHREEKISLEELRRRHKVLVGEFAQIREEREINSKK RMEAEQEMVRMVR AATLIQALWKGYLVR SLLRSK KKR GK G KAKDKEKGKQKGKEK GKGKK
Applications	Enzyme-linked Immunoabsorbent Assay Western Blot (Recombinant protein) Antibody Production Protein Array
Notes	Best use within three months from the date of receipt of this protein.

Tel: 1-631-559-9269 1-516-512-3133

Email: info@creative-biomart.com Fax: 1-631-938-8127

45-1 Ramsey Road, Shirley, NY 11967, USA

Storage Store at -80 centigrade. Aliquot to avoid repeated freezing and thawing.

Storage Buffer 50 mM Tris-HCl, 10 mM reduced Glutathione, pH=8.0 in the elution buffer.

GENE INFORMATION

Gene Name IQCD IQ motif containing D [Homo sapiens]

Official Symbol IQCD

Synonyms IQCD; IQ motif containing D; IQ domain-containing protein D; 4933433C09Rik;

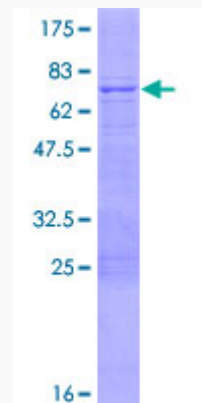
Gene ID 115811

mRNA Refseq NM_138451

Protein Refseq NP_612460

UniProt ID Q96DY2

Quality Control Testing



12.5% SDS-PAGE Stained with Coomassie Blue

 Tel: 1-631-559-9269 1-516-512-3133

 Email: info@creative-biomart.com  Fax: 1-631-938-8127

 45-1 Ramsey Road, Shirley, NY 11967, USA