

Recombinant Human IQCF1 Protein, GST-tagged

Cat. No. IQCF1-5066H Lot. No. (See product label)

SPECIFICATION

Product Overview	Human IQCF1 full-length ORF (NP_689610.1, 1 a.a. - 205 a.a.) recombinant protein with GST-tag at N-terminal.
Species	Human
Source	Wheat Germ
Description	IQCF1 (IQ Motif Containing F1) is a Protein Coding gene. An important paralog of this gene is IQCF5.
Molecular Mass	50.1 kDa
AA Sequence	MEEKQPQKTKEPSKEDEPQQKEMPTHLSLGAESKAEAKTPVLVETQTVDNANEKSE KPPENQKKLSDKDTVATKIKAWWRGTLVRRALLHAALSACIIQCWWRLILSKILKKRR QAALEAFSRKEWAAVTLQSQARMWRIRRRYQCQLNAVRIIQAYWRCRSCASRGFIK GQYRV TANQLHLQLEILLDSGPCIVTECIPFSIKE
Applications	Enzyme-linked Immunoabsorbent Assay Western Blot (Recombinant protein) Antibody Production Protein Array
Notes	Best use within three months from the date of receipt of this protein.
Storage	Store at -80 centigrade. Aliquot to avoid repeated freezing and thawing.

 Tel: 1-631-559-9269 1-516-512-3133

 Email: info@creative-biomart.com  Fax: 1-631-938-8127

 45-1 Ramsey Road, Shirley, NY 11967, USA

Storage Buffer 50 mM Tris-HCl, 10 mM reduced Glutathione, pH=8.0 in the elution buffer.

GENE INFORMATION

Gene Name IQCF1 IQ motif containing F1 [Homo sapiens]

Official Symbol IQCF1

Synonyms IQCF1; IQ motif containing F1; IQ domain-containing protein F1; MGC39725; FLJ27508;

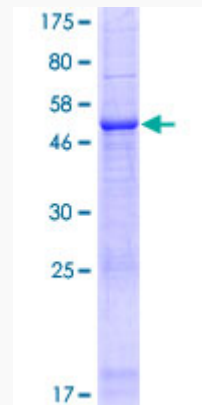
Gene ID 132141

mRNA Refseq NM_152397

Protein Refseq NP_689610

UniProt ID Q8N6M8

Quality Control Testing



12.5% SDS-PAGE Stained with Coomassie Blue

 Tel: 1-631-559-9269 1-516-512-3133

 Email: info@creative-biomart.com  Fax: 1-631-938-8127

 45-1 Ramsey Road, Shirley, NY 11967, USA