

Recombinant Human IQSEC1 Protein, GST-tagged

Cat. No. IQSEC1-5059H Lot. No. (See product label)

SPECIFICATION

Product Overview Human IQSEC1 full-length ORF (AAH10267.1, 1 a.a. - 814 a.a.) recombinant protein with GST-tag at N-terminal.

Species Human

Source Wheat Germ

Description IQSEC1 (IQ Motif And Sec7 Domain 1) is a Protein Coding gene. Among its related pathways are Arf6 signaling events and EGF/EGFR Signaling Pathway. GO annotations related to this gene include lipid binding and ARF guanyl-nucleotide exchange factor activity. An important paralog of this gene is IQSEC2.

Molecular Mass 118.4 kDa

AA Sequence

```
MLERKYGGRLVTRHAARTIQTAFRQYQMNKNFERLRSSMSSENMSRRIVLSNMRRM
QFSFEGPEKVHSSYFEGKQVSVTNDGSQLGALVSPECGLSEPTTLKSPAPSSDFA
DAITELEDAFSRQVKSLAESIDDALNCRSLHTEEAPALDAARARDTEPQTALHGMDH
RKLDEMTASYSDVTLYIDEEELSPPLPLSQAGDRPSSSTESDLRLRAGGAAPDYWALA
HKEDKADTDTSRSTPSLERQEQRRLVEHLPLLTIEPPSDSSVDLSDRSERGSLKRQ
SAYERSLGGQQGSPKHGPHSGAPKSLPREPELRRPRRPLDSHLAINGSANRQS
KESDYSDGDNDSINSTSNSNDTINCSSSESSSRDSLREQTLQTYHKEARNSWDS
PAFSNDVIRKRHYRIGLNLFNKKPEKGVQYLIERGFVPDTPVGVVAHFLLQRKGLSRQ
MIGEF LGNRQKQFNRDVLD CVVDEMDFSTMELDEALRKFQAHIRVQGEAQKVERLI
EAFSQR YCICNPGVVRQFRNPDTIFILAF AILLNTDMYSPNVKPERKMKLEDFIKNLR
```

 Tel: 1-631-559-9269 1-516-512-3133

 Email: info@creative-biomart.com  Fax: 1-631-938-8127

 45-1 Ramsey Road, Shirley, NY 11967, USA

GVDDGEDIPREMLMGIYERIRKRELKTNEDHVSQVQKVEKLIVGKKPIGSLHPGLGC
 VLSLPHRRLVCYCRLFEPDPNKPQKLGHLHQREIFLFDLLVVTKIFQKKKNSVTYSF
 RQSFSLYGMQVLLFENQYYPNGIRLTSSVPGADIKVLINFNAPNPQDRKKFTDDLRE
 SIAEVQEMEKHRIESELEKQKGVVRPMSQCSSLKKEGNGTLSRACLDDSYASGE
 GLKRSALSSSLRDLSEAGVHH

Applications
 Enzyme-linked Immunoabsorbent Assay
 Western Blot (Recombinant protein)
 Antibody Production
 Protein Array

Notes
 Best use within three months from the date of receipt of this protein.

Storage
 Store at -80 centigrade. Aliquot to avoid repeated freezing and thawing.

Storage Buffer
 50 mM Tris-HCl, 10 mM reduced Glutathione, pH=8.0 in the elution buffer.

GENE INFORMATION

Gene Name [IQSEC1 IQ motif and Sec7 domain 1 \[Homo sapiens \]](#)

Official Symbol [IQSEC1](#)

Synonyms BRAG2; GEP100; ARFGEP100; ARF-GEP100; IQSEC1; IQ motif and Sec7 domain 1

Gene ID [9922](#)

mRNA Refseq [NM_014869](#)

Protein Refseq [NP_055684](#)

 Tel: 1-631-559-9269 1-516-512-3133

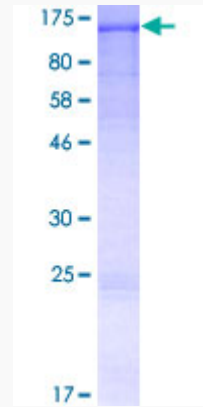
 Email: info@creative-biomart.com  Fax: 1-631-938-8127

 45-1 Ramsey Road, Shirley, NY 11967, USA

MIM 610166

UniProt ID Q6DN90

**Quality Control
Testing**



12.5% SDS-PAGE Stained with Coomassie Blue

 Tel: 1-631-559-9269 1-516-512-3133

 Email: info@creative-biomart.com  Fax: 1-631-938-8127

 45-1 Ramsey Road, Shirley, NY 11967, USA