

# Recombinant Human IREB2 Protein, Myc/DDK-tagged, C13 and N15-labeled

**Cat. No.** IREB2-2269H    **Lot. No.** (See product label)

## SPECIFICATION

<b>Product Overview</b>	IREB2 MS Standard C13 and N15-labeled recombinant protein (NP_004127) with a C-terminal MYC/DDK tag, was expressed in HEK293 cells.
<b>Species</b>	Human
<b>Source</b>	HEK293
<b>Description</b>	The protein encoded by this gene is an RNA-binding protein that acts to regulate iron levels in the cells by regulating the translation and stability of mRNAs that affect iron homeostasis under conditions when iron is depleted. When iron levels are low, this protein binds to iron-responsive elements (IRES), stem-loop structures located either in the 5' or 3' UTRs. Binding to the 5' UTR represses translation, while binding to the 3' UTR inhibits mRNA degradation. When iron is found in the cell, this protein is degraded in a F-box and leucine rich repeat protein 5-dependent manner. Variants in this gene have been associated with lung cancer and chronic obstructive pulmonary disease (COPD). Alternative splicing results in multiple transcript variants encoding different isoforms.
<b>Molecular Mass</b>	104.9 kDa
<b>AA Sequence</b>	MDAPKAGYAFEYLIETLNDSSHKFFDVSKLGTKYDVLPSYRVLLEAAVRNCDGFL MKKEDVMNILDWTKQSNVEVPFFPARVLLQDFTGIPAMVDFAAAMREAVKTLGGDP EKVHPACPTDLTVDHSLQIDFSKCAIQNAPNPGGGDLQKAGKLSPLKVQPKLPCR

 Tel: 1-631-559-9269    1-516-512-3133

 Email: [info@creative-biomart.com](mailto:info@creative-biomart.com)     Fax: 1-631-938-8127

 45-1 Ramsey Road, Shirley, NY 11967, USA

GQTTCRGSCDSGELGRNSGTFSSQIENTPILCPFHLQPVPETVLKNQEVEFGRN  
 RERLQFFKWSSRVFKNVAVIPPGTGMAHQINLEYLSRVVFEEKDLLFPDSVVGTDSDH  
 ITMVNGLGILGWGVGGIETEAVMLGLPVSLTLPEVVGCELTGSSNPFVTSIDVVLGIT  
 KHLRQVGVAGKFVEFFGSGVSQLSIVDRTTIANMCPEYGAILSFFPVDNVTLKHLEHT  
 GFSKAKLESMETYLKAVKLFNRNDQNSSGEPEYSQVIQINLNSIVPSVSGPKRPQDRV  
 AVTDMKSDFFQACLNEKVGFKGFQIAAEKQKDIVSIHYEGSEYKLSHGSSVIAAIVISCT  
 NNCNPSVMLAAGLLAKKAVEAGLRVKPYIRTSLSPGSGMVTHYLSSSGVLPLYLSKLG  
 FEIVGYGCSTCVGNTAPLSDAVLNAVQKQDLVTCGILSGNKNFEGRLCDCVRANYLA  
 SPPLVVAYAIAGTVNIDFQTEPLGTDPTGKNIYLHDIWPSREEVHRVEEEHVILSMFK  
 ALKDKIEMGNKRWNSLEAPDSVLFPWDLKSTYIRCPSFFDKLTKEPIALQAIENAHVL  
 LYLGDSTVTTDHISPAGSIARNSAAAKYLTNRGLTPREFNSYGARRGNDAVMTRGTFA  
 NIKLFNKFIGKPAPKTIHFPSGQTLDFEAAELYQKEGIPLIILAGKKYGSGNSRDWAA  
 KGPYLLGVKAVLAESYEKIHKDHILIGIGIAPLQFLPGENADSLGLSGRETFSLTFPEEL  
 SPGITLNIQTSTGKVFSVIASFEDDVEITLYKHGGLLNFFVARKFSTRTRPLEQKLISEED  
 LAANDILDYKDDDDKV

**Purity** > 80% as determined by SDS-PAGE and Coomassie blue staining

**Stability** Stable for 3 months from receipt of products under proper storage and handling conditions.

**Storage** Store at -80 centigrade. Avoid repeated freeze-thaw cycles.

**Concentration** 50 µg/mL as determined by BCA

**Storage Buffer** 100 mM glycine, 25 mM Tris-HCl, pH 7.3.

## GENE INFORMATION

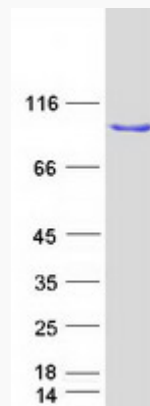
**Gene Name** IREB2 iron-responsive element binding protein 2 [ Homo sapiens (human) ]

 Tel: 1-631-559-9269 1-516-512-3133

 Email: [info@creative-biomart.com](mailto:info@creative-biomart.com)  Fax: 1-631-938-8127

 45-1 Ramsey Road, Shirley, NY 11967, USA

<b>Official Symbol</b>	IREB2
<b>Synonyms</b>	IREB2; iron-responsive element binding protein 2; iron-responsive element-binding protein 2; IRP2; IRE-BP 2; iron regulatory protein 2; ACO3; IRP2AD; FLJ23381;
<b>Gene ID</b>	3658
<b>mRNA Refseq</b>	NM_004136
<b>Protein Refseq</b>	NP_004127
<b>MIM</b>	147582
<b>UniProt ID</b>	P48200

**SDS-PAGE**

 Tel: 1-631-559-9269 1-516-512-3133

 Email: [info@creative-biomart.com](mailto:info@creative-biomart.com)  Fax: 1-631-938-8127

 45-1 Ramsey Road, Shirley, NY 11967, USA