

Recombinant Human IREB2 Protein, GST-tagged

Cat. No. IREB2-5047H **Lot. No.** (See product label)

SPECIFICATION

Product Overview	Human IREB2 full-length ORF (AAH17880, 1 a.a. - 343 a.a.) recombinant protein with GST-tag at N-terminal.
Species	Human
Source	Wheat Germ
Description	IREB2 (Iron Responsive Element Binding Protein 2) is a Protein Coding gene. Diseases associated with IREB2 include Microcytic Anemia and Hyperferritinemia-Cataract Syndrome. Among its related pathways are Validated targets of C-MYC transcriptional activation and Glucose / Energy Metabolism. GO annotations related to this gene include RNA binding and translation repressor activity. An important paralog of this gene is ACO1.
Molecular Mass	63.47 kDa
AA Sequence	MDAPKAGYAFEYLIETLNDSSHKFFDVSKLGTKYDVLPSIRVLLLEAAVRNCDGFL MKKEDVMNILDWTKQSNVEVPFFPARVLLQDFTGIPAMVDFAAMREAVKTLGGDP EKVHPACPTDLTVDHSLQIDFSKCAIQNAPNPGGDLQKAGKLSPLKVQPKLPCR GQTTCRGSCDSGELGRNSGTFSSQIENTPILCPFHLQPPEPETVLKNQEVEFGRN RERLQFFKWSSRVFKNVAVIPPGTGMAHQINLEYLSRVVFEEKDLLFPDSVVGTDSDH ITMVNGLGILGWGVGGIETEAVMLGLPVSLTLPEVVGCELTGSSNPFVTSIDVVLGIT KVS
Applications	Enzyme-linked Immunoabsorbent Assay

 Tel: 1-631-559-9269 1-516-512-3133

 Email: info@creative-biomart.com  Fax: 1-631-938-8127

 45-1 Ramsey Road, Shirley, NY 11967, USA

Western Blot (Recombinant protein)
 Antibody Production
 Protein Array

Notes	Best use within three months from the date of receipt of this protein.
Storage	Store at -80 centigrade. Aliquot to avoid repeated freezing and thawing.
Storage Buffer	50 mM Tris-HCl, 10 mM reduced Glutathione, pH=8.0 in the elution buffer.

GENE INFORMATION

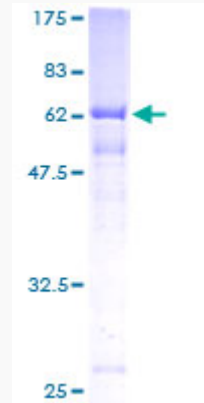
Gene Name	IREB2 iron-responsive element binding protein 2 [Homo sapiens]
Official Symbol	IREB2
Synonyms	IREB2; iron-responsive element binding protein 2; iron-responsive element-binding protein 2; IRP2; IRE-BP 2; iron regulatory protein 2; ACO3; IRP2AD; FLJ23381;
Gene ID	3658
mRNA Refseq	NM_004136
Protein Refseq	NP_004127
MIM	147582
UniProt ID	P48200

 Tel: 1-631-559-9269 1-516-512-3133

 Email: info@creative-biomart.com  Fax: 1-631-938-8127

 45-1 Ramsey Road, Shirley, NY 11967, USA

**Quality Control
Testing**



12.5% SDS-PAGE Stained with Coomassie Blue

 Tel: 1-631-559-9269 1-516-512-3133

 Email: info@creative-biomart.com  Fax: 1-631-938-8127

 45-1 Ramsey Road, Shirley, NY 11967, USA