

## Recombinant Human IRF3 Protein, His-tagged

Cat. No. IRF3-013H Lot. No. (See product label)

### SPECIFICATION

<b>Product Overview</b>	Recombinant full length human IRF3 protein (1-427) with a N-terminally Histidine tag was expressed in E. coli.
<b>Species</b>	Human
<b>Source</b>	E.coli
<b>ProteinLength</b>	1-427
<b>Description</b>	This gene encodes a member of the interferon regulatory transcription factor (IRF) family. The encoded protein is found in an inactive cytoplasmic form that upon serine/threonine phosphorylation forms a complex with CREBBP. This complex translocates to the nucleus and activates the transcription of interferons alpha and beta, as well as other interferon-induced genes. The protein plays an important in the innate immune response against DNA and RNA viruses.
<b>Form</b>	50 mM HEPES, pH 8.0, 150 mM sodium chloride, and 10% glycerol
<b>Molecular Mass</b>	49.6 kDa
<b>Purity</b>	≥85% estimated by SDS-PAGE
<b>Stability</b>	≥ 1 year
<b>Storage</b>	Store at -80 centigrade

 Tel: 1-631-559-9269 1-516-512-3133

 Email: [info@creative-biomart.com](mailto:info@creative-biomart.com)  Fax: 1-631-938-8127

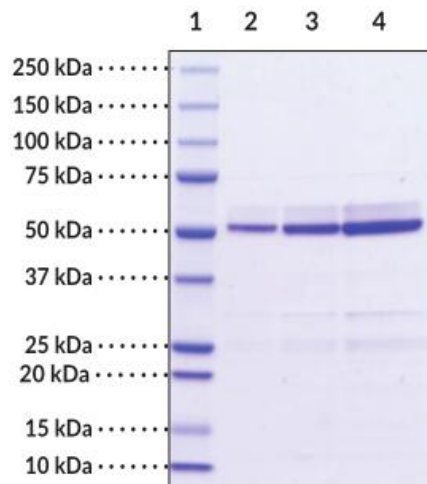
 45-1 Ramsey Road, Shirley, NY 11967, USA

**Shipping** Dry ice in continental US; may vary elsewhere

## GENE INFORMATION

<b>Gene Name</b>	IRF3 interferon regulatory factor 3 [ Homo sapiens (human) ]
<b>Official Symbol</b>	IRF3
<b>Synonyms</b>	IRF3; interferon regulatory factor 3; IIAE7; interferon regulatory factor 3
<b>Gene ID</b>	3661
<b>mRNA Refseq</b>	NM_001197122
<b>Protein Refseq</b>	NP_001184051
<b>MIM</b>	603734
<b>UniProt ID</b>	Q14653

**SDS-PAGE analysis of IRF3.**



Tel: 1-631-559-9269 1-516-512-3133

Email: [info@creative-biomart.com](mailto:info@creative-biomart.com) Fax: 1-631-938-8127

45-1 Ramsey Road, Shirley, NY 11967, USA



Lane 1: MW Markers


Lane 2: IRF3 (1 g)

Lane 3: IRF3 (2 g)

Lane 4: IRF3 (4 g)

 Tel: 1-631-559-9269 1-516-512-3133

 Email: [info@creative-biomart.com](mailto:info@creative-biomart.com)  Fax: 1-631-938-8127

 45-1 Ramsey Road, Shirley, NY 11967, USA