

# Recombinant Full Length Human IRF3 Protein, C-Flag-tagged

Cat. No. IRF3-497HFL Lot. No. (See product label)

## SPECIFICATION

<b>Product Overview</b>	Recombinant Full Length Human IRF3 Protein, fused to Flag-tag at C-terminus, was expressed in Mammalian cells.
<b>Species</b>	Human
<b>Source</b>	Mammalian Cells
<b>Description</b>	This gene encodes a member of the interferon regulatory transcription factor (IRF) family. The encoded protein is found in an inactive cytoplasmic form that upon serine/threonine phosphorylation forms a complex with CREBBP. This complex translocates to the nucleus and activates the transcription of interferons alpha and beta, as well as other interferon-induced genes. The protein plays an important role in the innate immune response against DNA and RNA viruses. Mutations in this gene are associated with Encephalopathy, acute, infection-induced, herpes-specific, 7.
<b>Form</b>	25 mM Tris HCl, pH 7.3, 100 mM glycine, 10% glycerol.
<b>Molecular Mass</b>	47 kDa
<b>AA Sequence</b>	MGTPKPRILPWLVSQDLGQLEGVAWVNKSRTFRIPWKHGLRQDAQQEDFGIFQA WAEATGAYVPGRDK PDLPTWKRNFERSALNRKEGLRLAEDRSKDPHDPHKIYEFVN SGVGDFSQPDTSPTDNGGGSTSDTQEDIL DELLGNMVLAPLPDPGPPSLAVAPEPC PQPLRSPSLDNPTFPNLPSENPLKRLLVPGEEWEFEVTFY RGRQVFQQTISCP EGLRLVGSEVGDRTLPGWPVTLDPGMSLTDRGVMSYVRHVLSCGGGLALWRA GQW LWAQRLGHCHTYWAVSELLPNSGHGPDGEVPKDKEGGVFDLGPFFIVDLITF

 Tel: 1-631-559-9269 1-516-512-3133

 Email: [info@creative-biomart.com](mailto:info@creative-biomart.com)  Fax: 1-631-938-8127

 45-1 Ramsey Road, Shirley, NY 11967, USA

TEGSGRSPRYALWFCVGE SWPQDQPWTKRLVMVKVPTCLRALVEMARVGGASS  
 LENTVDLHISNSHPLSLTSDQYKAYLQDLVEGMD  
 FQGPGESTRTRPLEQKLISEEDLAANDILDYKDDDDKV

**Purity** > 80% as determined by SDS-PAGE and Coomassie blue staining.

**Stability** Stable for 12 months from the date of receipt of the product under proper storage and handling conditions. Avoid repeated freeze-thaw cycles.

**Storage** Store at -80 centigrade.

**Concentration** >50 ug/mL as determined by microplate BCA method.

**Preparation** Recombinant protein was captured through anti-DDK affinity column followed by conventional chromatography steps.

**Protein Families** Druggable Genome, Transcription Factors

**Protein Pathways** Cytosolic DNA-sensing pathway, RIG-I-like receptor signaling pathway, Toll-like receptor signaling pathway

**Full Length** Full L.

## GENE INFORMATION

**Gene Name** IRF3 interferon regulatory factor 3 [ Homo sapiens (human) ]

**Official Symbol** IRF3

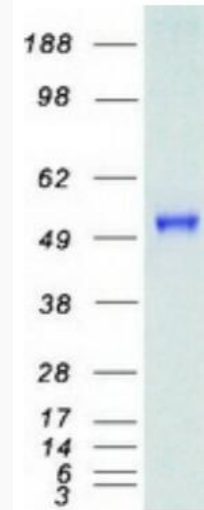
**Synonyms** IIAE7

 Tel: 1-631-559-9269 1-516-512-3133

 Email: [info@creative-biomart.com](mailto:info@creative-biomart.com)  Fax: 1-631-938-8127

 45-1 Ramsey Road, Shirley, NY 11967, USA

Gene ID	3661
mRNA Refseq	NM_001571.6
Protein Refseq	NP_001562.1
MIM	603734
UniProt ID	Q14653



Coomassie blue staining of purified IRF3 protein.

Tel: 1-631-559-9269 1-516-512-3133

Email: [info@creative-biomart.com](mailto:info@creative-biomart.com) Fax: 1-631-938-8127

45-1 Ramsey Road, Shirley, NY 11967, USA