

Recombinant Human IRF3 Protein, GST-tagged

Cat. No. IRF3-5041H Lot. No. (See product label)

SPECIFICATION

Product Overview Human IRF3 full-length ORF (AAH09395, 1 a.a. - 452 a.a.) recombinant protein with GST-tag at N-terminal.

Species Human

Source Wheat Germ

Description IRF3 encodes interferon regulatory factor 3, a member of the interferon regulatory transcription factor (IRF) family. IRF3 is found in an inactive cytoplasmic form that upon serine/threonine phosphorylation forms a complex with CREBBP. This complex translocates to the nucleus and activates the transcription of interferons alpha and beta, as well as other interferon-induced genes. [provided by RefSeq]

Molecular Mass 75.24 kDa

AA Sequence
MGTPKPRILPWLVSQDLGQLEGVAWVNKSRTFRIPWKHGLRQDAQQEDFGIFQA
WAEATGAYVPGRDKPDLPWKRNFRSALS SRKEGLRLAEDRSKDPHDPHKIYEFVNS
GVGDFSQPDTSPTDNGGGSTSDTQEDILDELLGNMVLAPLPDPGPPSLAVAPEPCP
QPLRSPSLDNPTFPNLGSENPLKROLLVPGEWEFEVTA FYRGRQVFQQTISCPE
GLRLVGSEVGDRTLPGWPVTLDPGMSLTDRGVMSYVRHVL SCLGGGLALWRAG
QWLWAQRLGHCHTYWAVSEELLNSGHGPDGEV PKGKEGGVFDLGPFI VGSWAP
RSDYLHGRKRTLTTLCPLVLCGGVMAPGPAVDQEARDGQGC AHPQQLGRNGPG
RGCLLPGEYCGPAHFQQPPTLPHLRPVQGLPAGLGGGHGFPGPWGDLSPRSSWC
ASNPPVPHHLNQ

 Tel: 1-631-559-9269 1-516-512-3133

 Email: info@creative-biomart.com  Fax: 1-631-938-8127

 45-1 Ramsey Road, Shirley, NY 11967, USA

Applications	Enzyme-linked Immunoabsorbent Assay Western Blot (Recombinant protein) Antibody Production Protein Array
Notes	Best use within three months from the date of receipt of this protein.
Storage	Store at -80 centigrade. Aliquot to avoid repeated freezing and thawing.
Storage Buffer	50 mM Tris-HCl, 10 mM reduced Glutathione, pH=8.0 in the elution buffer.

GENE INFORMATION

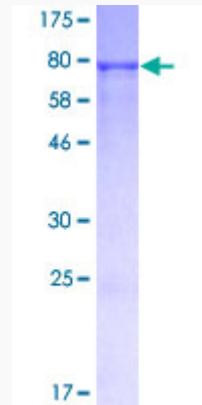
Gene Name	IRF3 interferon regulatory factor 3 [Homo sapiens]
Official Symbol	IRF3
Synonyms	IRF3; interferon regulatory factor 3;
Gene ID	3661
mRNA Refseq	NM_001197128
Protein Refseq	NP_001184057
MIM	603734
UniProt ID	Q14653

 Tel: 1-631-559-9269 1-516-512-3133

 Email: info@creative-biomart.com  Fax: 1-631-938-8127

 45-1 Ramsey Road, Shirley, NY 11967, USA

**Quality Control
Testing**



12.5% SDS-PAGE Stained with Coomassie Blue

 Tel: 1-631-559-9269 1-516-512-3133

 Email: info@creative-biomart.com  Fax: 1-631-938-8127

 45-1 Ramsey Road, Shirley, NY 11967, USA