

Recombinant Human IRF4 Protein, N-His tagged

Cat. No. IRF4-106H Lot. No. (See product label)

SPECIFICATION

Product Overview	Recombinant Human IRF4 protein(1-451 aa), fused with His tag, was expressed in E. coli.
Species	Human
Source	E.coli
ProteinLength	1-451 aa
Form	Lyophilized from sterile 50mM Tris, 200mM NaCl, pH 8.5, 5% Manitol, 5% Trehalose.
Molecular Mass	The protein has a calculated MW of 55 kDa.
Endotoxin	Less than 1.0 EU per µg by the LAL method.
Purity	> 90% as determined by SDS-PAGE.
Storage	Store it under sterile conditions at -20°C to -80°C. It is recommended that the protein be aliquoted for optimal storage. Avoid repeated freeze-thaw cycles.
Reconstitution	It is recommended that sterile water be added to the vial to prepare a stock solution of 0.5 ug/ul. Centrifuge the vial at 4°C before opening to recover the entire contents.
AA Sequence	MGSSHHHHHHSSGLVPRGSHMASMTGGQQMGRGSMNLEGGGRGGEGFGMSAVS CGNGKLRQWLIDQIDSGKYPGLVWENEEKSIFRIPWKHAGKQDYNREEDAALFKAW

 Tel: 1-631-559-9269 1-516-512-3133

 Email: info@creative-biomart.com  Fax: 1-631-938-8127

 45-1 Ramsey Road, Shirley, NY 11967, USA

ALFKGKFREGIDKDPPTWKTRLRCALNKSNDFEELVERSQLDISDPYKVYRIVPEG
 AKKGAKQLTLEDPQMSMSHPYTMTPYPSPSPAQQVHNYMMPPLDRSWRDYVPDQ
 PHPEIPYQCPMTFGPRGHHWQGPACENGCQVTGTFYACAPPESQAPGVPTEPSIR
 SAEALAFSDCRLHICLYREILVKELTTSSPEGCRISHGHTYDASNLDQVLFYPEDN
 GQRKNIEKLLSHLERGVVLWMAPDGLYAKRLCQSRIYWDGPLALCNDRPNKLERDQ
 TCKLFDTQQFLSELQAFHHGRSLPRFQVTLFCGEEFPDPQRQRKLITAHVEPLLAR
 QLYYFAQQNSGHFLRGYDLPEHISNPEDYHRSIRHSSIQE

GENE INFORMATION

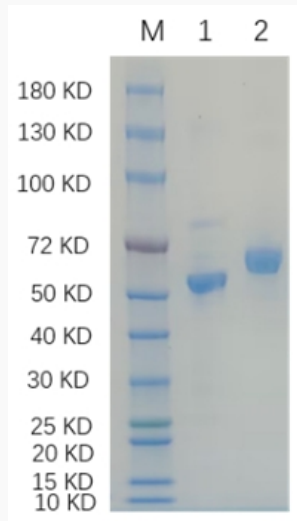
Gene Name	IRF4 interferon regulatory factor 4 [Homo sapiens]
Official Symbol	IRF4
Synonyms	IRF4; interferon regulatory factor 4; MUM1; LSIRF; multiple myeloma oncogene 1; lymphocyte-specific interferon regulatory factor; NF-EM5
Gene ID	3662
mRNA Refseq	NM_001195286
Protein Refseq	NP_001182215
MIM	601900
UniProt ID	Q15306

 Tel: 1-631-559-9269 1-516-512-3133

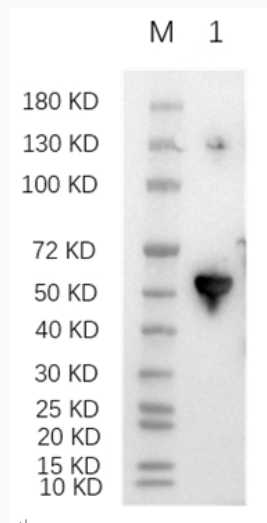
 Email: info@creative-biomart.com  Fax: 1-631-938-8127

 45-1 Ramsey Road, Shirley, NY 11967, USA

SDS-PAGE



WB



 Tel: 1-631-559-9269 1-516-512-3133

 Email: info@creative-biomart.com  Fax: 1-631-938-8127

 45-1 Ramsey Road, Shirley, NY 11967, USA