

# Recombinant Full Length Human IRF4 Protein, C-Flag-tagged

Cat. No. IRF4-404HFL Lot. No. (See product label)

## SPECIFICATION

<b>Product Overview</b>	Recombinant Full Length Human IRF4 Protein, fused to Flag-tag at C-terminus, was expressed in Mammalian cells.
<b>Species</b>	Human
<b>Source</b>	Mammalian Cells
<b>Description</b>	The protein encoded by this gene belongs to the IRF (interferon regulatory factor) family of transcription factors, characterized by a unique tryptophan pentad repeat DNA-binding domain. The IRFs are important in the regulation of interferons in response to infection by virus, and in the regulation of interferon-inducible genes. This family member is lymphocyte specific and negatively regulates Toll-like-receptor (TLR) signaling that is central to the activation of innate and adaptive immune systems. A chromosomal translocation involving this gene and the IgH locus, t(6;14)(p25;q32), may be a cause of multiple myeloma. Alternatively spliced transcript variants have been found for this gene.
<b>Form</b>	25 mM Tris HCl, pH 7.3, 100 mM glycine, 10% glycerol.
<b>Molecular Mass</b>	51.6 kDa
<b>AA Sequence</b>	MNLEGGGRGGEGFGMSAVSCGNGKLRQWLIDQIDSGKYPGLVWENEKESIFRIPWK HAGKQDYNREEDAAL FKAWALFKGKFREGIDKPDPTWKTRLRCALNKSNDFEEL VERSQLDISDPYKVYRIVPEGAKKGAKQLT LEDPQMSMSHPYTMTPYPSLPAQQV HNYMMPPLDRSWRDYVPDQPHPEIPYQCPMTFGPRGHHWQGPAC ENGCVTGT

 Tel: 1-631-559-9269 1-516-512-3133

 Email: [info@creative-biomart.com](mailto:info@creative-biomart.com)  Fax: 1-631-938-8127

 45-1 Ramsey Road, Shirley, NY 11967, USA

FYACAPPESQAPGVPTPEPSIRSAEALAFSDCRLHICLYYREILVKELTTSSPEGCRISH  
 GH TYDASNLDQVLFYPEDNGQRKNIKLLSHLERGVVLWMAPDGLYAKRLCQSRI  
 YWDGPLALCNDPRPNKL ERDQTCKLFDTQQFLSELQAFHHGRSLPRFQVTLCFGE  
 EFPDQRQRKLITAHVEPLLARQLYYFAQQN  
 SGHFLRGYDLPEHISNPEDYHRSIRHSSIQETRTRPLEQKLISEEDLAANDILDYKDD  
 DDKV

<b>Purity</b>	> 80% as determined by SDS-PAGE and Coomassie blue staining.
<b>Stability</b>	Stable for 12 months from the date of receipt of the product under proper storage and handling conditions. Avoid repeated freeze-thaw cycles.
<b>Storage</b>	Store at -80 centigrade.
<b>Concentration</b>	>50 ug/mL as determined by microplate BCA method.
<b>Preparation</b>	Recombinant protein was captured through anti-DDK affinity column followed by conventional chromatography steps.
<b>Protein Families</b>	Druggable Genome, Transcription Factors
<b>Full Length</b>	Full L.

## GENE INFORMATION

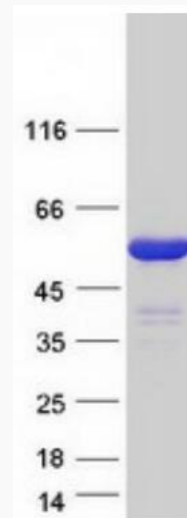
<b>Gene Name</b>	IRF4 interferon regulatory factor 4 [ Homo sapiens (human) ]
<b>Official Symbol</b>	IRF4
<b>Synonyms</b>	MUM1; LSIRF; SHEP8; NF-EM5

 Tel: 1-631-559-9269 1-516-512-3133

 Email: [info@creative-biomart.com](mailto:info@creative-biomart.com)  Fax: 1-631-938-8127

 45-1 Ramsey Road, Shirley, NY 11967, USA

Gene ID	3662
mRNA Refseq	NM_002460.4
Protein Refseq	NP_002451.2
MIM	601900
UniProt ID	Q15306



Coomassie blue staining of purified IRF4 protein.

Tel: 1-631-559-9269 1-516-512-3133

Email: [info@creative-biomart.com](mailto:info@creative-biomart.com) Fax: 1-631-938-8127

45-1 Ramsey Road, Shirley, NY 11967, USA