

Recombinant Human IRF6 Protein, Myc/DDK-tagged, C13 and N15-labeled

Cat. No. IRF6-5001H Lot. No. (See product label)

SPECIFICATION

Product Overview

IRF6 MS Standard C13 and N15-labeled recombinant protein (NP_006138) with a C-terminal MYC/DDK tag, was expressed in HEK293 cells.

Species

Human

Source

HEK293

Description

This gene encodes a member of the interferon regulatory transcription factor (IRF) family. Family members share a highly-conserved N-terminal helix-turn-helix DNA-binding domain and a less conserved C-terminal protein-binding domain. The encoded protein may be a transcriptional activator. Mutations in this gene can cause van der Woude syndrome and popliteal pterygium syndrome. Mutations in this gene are also associated with non-syndromic orofacial cleft type 6. Alternate splicing results in multiple transcript variants.

Molecular Mass

53.1 kDa

AA Sequence

MALHPRRVRLKPWLVAQVDSGLYPGLIWLHRDSKRFQIPWKHATRHSPQQEEENTI
FKAWAVETGKYQEGVDDPDPKWKQAQLRCALNKSREFNLMYDGTKEVPMNPVKIY
QVCDIPQPQGSIIINPGSTGSAPWDEKDNVDDEEDEDELQSQHHVPIQDTFPFLNI
NGSPMAPASVGNCSVGNCSPEAVWPKTEPLEMEVPQAPIQPFYSSPELWISSLPMT
DLDIKFQYRGKEYGQTMVSNPQGCRFLFYGDLGMPDQEELFGPVSLEQVKFPGP
EHITNEKQKLFTSKLLDVMRGLILEVSGHAIYAIRLCQCKVYWSGPCAPSLVAPNLIE

 Tel: 1-631-559-9269 1-516-512-3133

 Email: info@creative-biomart.com  Fax: 1-631-938-8127

 45-1 Ramsey Road, Shirley, NY 11967, USA

RQKKVKLFCLETFLSDLIAHQKGQIEKQPPFEIYLCFGEEWPDGKPLERKLILVQVIPV
 VARMİYEMFSGDFTRSFDSSVRLQISTPDIKDNIVAQLKQLYRILQTQESWQPMQP
 TPSMQLPPALPPQTRTRPLEQKLISEEDLAANDILDYKDDDDKV

Purity > 80% as determined by SDS-PAGE and Coomassie blue staining

Stability Stable for 3 months from receipt of products under proper storage and handling conditions.

Storage Store at -80 centigrade. Avoid repeated freeze-thaw cycles.

Concentration 50 µg/mL as determined by BCA

Storage Buffer 100 mM glycine, 25 mM Tris-HCl, pH 7.3.

GENE INFORMATION

Gene Name IRF6 interferon regulatory factor 6 [Homo sapiens (human)]

Official Symbol IRF6

Synonyms IRF6; interferon regulatory factor 6; LPS, Van der Woude syndrome, VWS; OFC6; VWS1; LPS; PIT; PPS; VWS;

Gene ID 3664

mRNA Refseq NM_006147

Protein Refseq NP_006138

MIM 607199

 Tel: 1-631-559-9269 1-516-512-3133

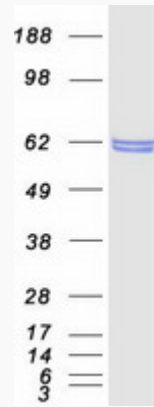
 Email: info@creative-biomart.com  Fax: 1-631-938-8127

 45-1 Ramsey Road, Shirley, NY 11967, USA

UniProt ID

O14896

SDS-PAGE



 Tel: 1-631-559-9269 1-516-512-3133

 Email: info@creative-biomart.com  Fax: 1-631-938-8127

 45-1 Ramsey Road, Shirley, NY 11967, USA