

## Recombinant Human IRF6 Protein, GST-tagged

Cat. No. IRF6-5035H Lot. No. (See product label)

### SPECIFICATION

<b>Product Overview</b>	Human IRF6 full-length ORF ( AAH14852.1, 1 a.a. - 467 a.a.) recombinant protein with GST-tag at N-terminal.
<b>Species</b>	Human
<b>Source</b>	Wheat Germ
<b>Description</b>	This gene encodes a member of the interferon regulatory transcription factor (IRF) family. Family members share a highly-conserved N-terminal helix-turn-helix DNA-binding domain and a less conserved C-terminal protein-binding domain. Mutations in this gene can cause van der Woude syndrome and popliteal pterygium syndrome. This protein is involved in palate formation. [provided by RefSeq]
<b>Molecular Mass</b>	76.89 kDa
<b>AA Sequence</b>	MALHPRRVRLKPWLVAQVDSGLYPGLIWLHRDSKRFQIPWKHATRHSPQQEEENAI FKAWAVETGKYQEGVDDPDPKWKAKLRCALNKSREFNLMYDGTKEVPMNPVKIY QVCDIPQPQGSIIINPGSTGSAPWDEKDNVDDEEDEELDQSQHHVPIQDTFPFLNI NGSPMAPASVGNCSVGNCSPEAVWPKTEPLEMEVPQAPIQPFYSSPELWISSLPMT DLDIKFQYRGKEYGQTMTVSNPQGCRFLFYGDLGMPDQEELFGPVSLEQVKFPGP EHITNEKQKLFTSKLLDVMRGLILEVSGHAIYAIRLCQCKVYWSGPCAPSLVAPNLIE RQKKVKLFCLETFLSDLIAHQKGQIEKQPPFEIYLCFGEEWPDGKPLERKLILVQVIPV VARMYEMFSGDFTRSFDSSVRLQISTPDIKDNIVAQLKQLYRILQTQESWQPMQP TPSMQLPPALPPQ

 Tel: 1-631-559-9269 1-516-512-3133

 Email: [info@creative-biomart.com](mailto:info@creative-biomart.com)  Fax: 1-631-938-8127

 45-1 Ramsey Road, Shirley, NY 11967, USA

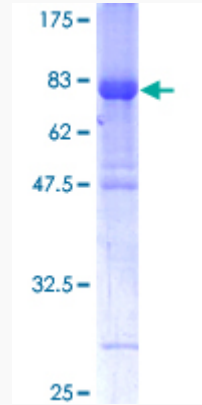
<b>Applications</b>	Enzyme-linked Immunoabsorbent Assay Western Blot (Recombinant protein) Antibody Production Protein Array
<b>Notes</b>	Best use within three months from the date of receipt of this protein.
<b>Storage</b>	Store at -80 centigrade. Aliquot to avoid repeated freezing and thawing.
<b>Storage Buffer</b>	50 mM Tris-HCl, 10 mM reduced Glutathione, pH=8.0 in the elution buffer.
<b>GENE INFORMATION</b>	
<b>Gene Name</b>	IRF6 interferon regulatory factor 6 [ Homo sapiens ]
<b>Official Symbol</b>	IRF6
<b>Synonyms</b>	IRF6; interferon regulatory factor 6; LPS, Van der Woude syndrome , VWS; OFC6; VWS1; LPS; PIT; PPS; VWS;
<b>Gene ID</b>	3664
<b>mRNA Refseq</b>	NM_001206696
<b>Protein Refseq</b>	NP_001193625
<b>MIM</b>	607199
<b>UniProt ID</b>	O14896

 Tel: 1-631-559-9269 1-516-512-3133

 Email: [info@creative-biomart.com](mailto:info@creative-biomart.com)  Fax: 1-631-938-8127

 45-1 Ramsey Road, Shirley, NY 11967, USA

**Quality Control  
Testing**



12.5% SDS-PAGE Stained with Coomassie Blue

 Tel: 1-631-559-9269 1-516-512-3133

 Email: [info@creative-biomart.com](mailto:info@creative-biomart.com)  Fax: 1-631-938-8127

 45-1 Ramsey Road, Shirley, NY 11967, USA