

# Recombinant Full Length Human IRF6 Protein, C-Flag-tagged

Cat. No. IRF6-528HFL Lot. No. (See product label)

## SPECIFICATION

<b>Product Overview</b>	Recombinant Full Length Human IRF6 Protein, fused to Flag-tag at C-terminus, was expressed in Mammalian cells.
<b>Species</b>	Human
<b>Source</b>	Mammalian Cells
<b>Description</b>	This gene encodes a member of the interferon regulatory transcription factor (IRF) family. Family members share a highly-conserved N-terminal helix-turn-helix DNA-binding domain and a less conserved C-terminal protein-binding domain. The encoded protein may be a transcriptional activator. Mutations in this gene can cause van der Woude syndrome and popliteal pterygium syndrome. Mutations in this gene are also associated with non-syndromic orofacial cleft type 6. Alternate splicing results in multiple transcript variants.
<b>Form</b>	25 mM Tris HCl, pH 7.3, 100 mM glycine, 10% glycerol.
<b>Molecular Mass</b>	52.9 kDa
<b>AA Sequence</b>	MALHPRRVRLKPWLVAQVDSGLYPGLIWLHRDSKRFQIPWKHATRHSPQQEEENTI FKAWAVETGKYQEG VDDPDPKWKAKQLRCALNKSREFNLMYDGTKEVPMNPVKIY QVCDIPQPQGSIIINPGSTGSAPWDEKDND VDEEDEEDELQSQHHVPIQDTFFFLNI NGSPMAPASVGNCSVGNCSPEAVWPKTEPLEMEVPQAPIQPF YSSPELWISSLPM TDLDIKFQYRGKEYGQTMTVSNPQGCRIFYGDLGMPDQEELFGPVSLEQVKFPG PE HITNEKQKLFTSKLLDVMDRGLILEVSGHAIYAIRLCQCKVYWSGPCAPSLVAPNL

 Tel: 1-631-559-9269 1-516-512-3133

 Email: [info@creative-biomart.com](mailto:info@creative-biomart.com)  Fax: 1-631-938-8127

 45-1 Ramsey Road, Shirley, NY 11967, USA

IERQKKVKLFCLET FLSDLIAHQKGQIEKQPPFEIYLCFGEEWPDGKPLERKLILVQVI  
 PVVARMİYEMFSGDFTRSFDSGSVR  
 LQISTPDIKDNIVAQLKQLYRILQTQESWQPMQPTPSMQLPPALPPQTRTRPLEQKLI  
 SEEDLAANDILDYKDDDDKV

<b>Purity</b>	> 80% as determined by SDS-PAGE and Coomassie blue staining.
<b>Stability</b>	Stable for 12 months from the date of receipt of the product under proper storage and handling conditions. Avoid repeated freeze-thaw cycles.
<b>Storage</b>	Store at -80 centigrade.
<b>Concentration</b>	>50 ug/mL as determined by microplate BCA method.
<b>Preparation</b>	Recombinant protein was captured through anti-DDK affinity column followed by conventional chromatography steps.
<b>Protein Families</b>	ES Cell Differentiation/IPS, Transcription Factors
<b>Full Length</b>	Full L.

## GENE INFORMATION

<b>Gene Name</b>	IRF6 interferon regulatory factor 6 [ Homo sapiens (human) ]
<b>Official Symbol</b>	IRF6
<b>Synonyms</b>	LPS; PIT; PPS; VWS; OFC6; PPS1; VWS1
<b>Gene ID</b>	3664

 Tel: 1-631-559-9269 1-516-512-3133

 Email: [info@creative-biomart.com](mailto:info@creative-biomart.com)  Fax: 1-631-938-8127

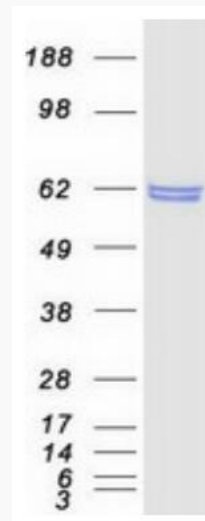
 45-1 Ramsey Road, Shirley, NY 11967, USA

mRNA Refseq [NM\\_006147.4](#)

Protein Refseq [NP\\_006138.1](#)

MIM [607199](#)

UniProt ID [O14896](#)



Coomassie blue staining of purified IRF6 protein.

 Tel: 1-631-559-9269 1-516-512-3133

 Email: [info@creative-biomart.com](mailto:info@creative-biomart.com)  Fax: 1-631-938-8127

 45-1 Ramsey Road, Shirley, NY 11967, USA