

# Recombinant Full Length Human IRF7 Protein, C-Flag-tagged

Cat. No. IRF7-1307HFL Lot. No. (See product label)

## SPECIFICATION

|                         |   |
|-------------------------|---|
| <b>Product Overview</b> | Recombinant Full Length Human IRF7 Protein, fused to Flag-tag at C-terminus, was expressed in Mammalian cells.  |
| <b>Species</b>          | Human   |
| <b>Source</b>           | Mammalian Cells   |
| <b>Description</b>      | This gene encodes interferon regulatory factor 7, a member of the interferon regulatory transcription factor (IRF) family. It has been shown to play a role in the transcriptional activation of virus-inducible cellular genes, including interferon beta chain genes. Inducible expression of IRF7 is largely restricted to lymphoid tissue. The encoded protein plays an important role in the innate immune response against DNA and RNA viruses. |
| <b>Form</b>             | 25 mM Tris HCl, pH 7.3, 100 mM glycine, 10% glycerol.   |
| <b>Molecular Mass</b>   | 54.1 kDa  |
| <b>AA Sequence</b>      | MALAPERAAPRVLFGEWLLGEISSGCYEGQLQWLDEARTCFRVPWKHFARKDLSEA<br>DARIFKAWAVARGRW PPSSRGGGPPPEAETAERAGWKTNFRCALRSTRRFVMLR<br>DNSGDPADPHKVYALSRELCWREGPGTDQTE AEAPAAVPPPQGGPPGFLAHTH<br>AGLQAPGPLPAPAGDKGDLQLQAVQQSCLADHLLTASWGADPVPTKA PGEGQEGL<br>PLTGACAGGPGLPAGELYGWAVETTPSPGPQPAALTTGEEAAPESPHQAEPYLSPS<br>PSACTA VQEPSPGALDVTIMYKGRVTLQKVVGHPSCFLYGPDPAVRATDPQQV<br>AFPSPAELPDQQLRYTEELL RHVAPGLHLELRGPQLWARRMGKCKVYWEVGGP                             |

 Tel: 1-631-559-9269 1-516-512-3133

 Email: [info@creative-biomart.com](mailto:info@creative-biomart.com)  Fax: 1-631-938-8127

 45-1 Ramsey Road, Shirley, NY 11967, USA

PGSASPSTPACLLPRNCDTPIFDFRVFFQELVEFRAR QRRGSPRYTIYLGFGQDLA  
 GRPKEKSLVLVKLEPWLCRVHLEGTQREGVSSLDSSSLCLLSSANSLYD  
 DIECFLMELEQPASGPSGPTRRRLEQKLISEEDLAANDILDYKDDDDKV

**Purity** > 80% as determined by SDS-PAGE and Coomassie blue staining.

**Stability** Stable for 12 months from the date of receipt of the product under proper storage and handling conditions. Avoid repeated freeze-thaw cycles.

**Storage** Store at -80 centigrade.

**Concentration** >50 ug/mL as determined by microplate BCA method.

**Preparation** Recombinant protein was captured through anti-DDK affinity column followed by conventional chromatography steps.

**Protein Families** Transcription Factors

**Protein Pathways** Cytosolic DNA-sensing pathway, RIG-I-like receptor signaling pathway, Toll-like receptor signaling pathway

**Full Length** Full L.

## GENE INFORMATION

**Gene Name** IRF7 interferon regulatory factor 7 [ Homo sapiens (human) ]

**Official Symbol** IRF7

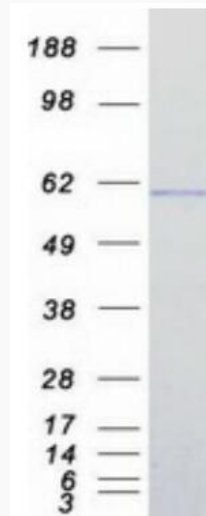
**Synonyms** IMD39; IRF-7; IRF7A; IRF7B; IRF7C; IRF7H; IRF-7H

 Tel: 1-631-559-9269 1-516-512-3133

 Email: [info@creative-biomart.com](mailto:info@creative-biomart.com)  Fax: 1-631-938-8127

 45-1 Ramsey Road, Shirley, NY 11967, USA

|                       |             |
|-----------------------|-------------|
| <b>Gene ID</b>        | 3665        |
| <b>mRNA Refseq</b>    | NM_001572.5 |
| <b>Protein Refseq</b> | NP_001563.2 |
| <b>MIM</b>            | 605047      |
| <b>UniProt ID</b>     | Q92985      |



Coomassie blue staining of purified IRF7 protein.

 Tel: 1-631-559-9269 1-516-512-3133

 Email: [info@creative-biomart.com](mailto:info@creative-biomart.com)  Fax: 1-631-938-8127

 45-1 Ramsey Road, Shirley, NY 11967, USA