

Recombinant Human IRGM Protein, GST-tagged

Cat. No. IRGM-5030H **Lot. No.** (See product label)

SPECIFICATION

| | |
|-------------------------|--|
| Product Overview | Human IRGM partial ORF (XP_293893.3, 99 a.a. - 181 a.a.) recombinant protein with GST-tag at N-terminal. |
| Species | Human |
| Source | Wheat Germ |
| Description | Members of the p47 immunity-related GTPase (IRG) family, including IRGM, play an important role in the murine immune system; however, in humans this resistance system is greatly reduced. There is evidence that human IRGM plays a role in autophagy and control of intracellular mycobacteria (Bekpen et al., 2005; Singh et al., 2006 [PubMed 16888103]).[supplied by OMIM |
| Molecular Mass | 34.87 kDa |
| AA Sequence | TTLENYLMEMQFNRYDFIMVASAQFSMNHVMLAKTAEDMGKKFYIVWTKLDMDLST GALPEVQLLQIRENVLENLQKERVCEY |
| Applications | Enzyme-linked Immunoabsorbent Assay Western Blot (Recombinant protein) Antibody Production Protein Array |
| Notes | Best use within three months from the date of receipt of this protein. |

 Tel: 1-631-559-9269 1-516-512-3133

 Email: info@creative-biomart.com  Fax: 1-631-938-8127

 45-1 Ramsey Road, Shirley, NY 11967, USA

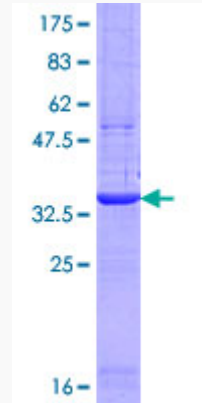
| | |
|-------------------------|---|
| Storage | Store at -80 centigrade. Aliquot to avoid repeated freezing and thawing. |
| Storage Buffer | 50 mM Tris-HCl, 10 mM reduced Glutathione, pH=8.0 in the elution buffer. |
| GENE INFORMATION | |
| Gene Name | IRGM immunity-related GTPase family, M [Homo sapiens] |
| Official Symbol | IRGM |
| Synonyms | IRGM; immunity-related GTPase family, M; immunity related GTPase family, M1 , IRGM1; immunity-related GTPase family M protein; IFI1; LRG 47; LRG47; LRG-47-like protein; interferon-inducible protein 1; immunity-related GTPase family, M1; LPS-stimulated RAW 264.7 macrophage protein 47 homolog; IRGM1; LRG-47; MGC149263; MGC149264; |
| Gene ID | 345611 |
| mRNA Refseq | NM_001145805 |
| Protein Refseq | NP_001139277 |
| MIM | 608212 |
| UniProt ID | A1A4Y4 |

 Tel: 1-631-559-9269 1-516-512-3133

 Email: info@creative-biomart.com  Fax: 1-631-938-8127

 45-1 Ramsey Road, Shirley, NY 11967, USA

**Quality Control
Testing**



12.5% SDS-PAGE Stained with Coomassie Blue

 Tel: 1-631-559-9269 1-516-512-3133

 Email: info@creative-biomart.com  Fax: 1-631-938-8127

 45-1 Ramsey Road, Shirley, NY 11967, USA