

Recombinant Human IRGQ Protein, Myc/DDK-tagged, C13 and N15-labeled

Cat. No. IRGQ-3735H **Lot. No.** (See product label)

SPECIFICATION

Product Overview	IRGQ MS Standard C13 and N15-labeled recombinant protein (NP_001007562) with a C-terminal MYC/DDK tag, was expressed in HEK293 cells.
Species	Human
Source	HEK293
Description	IRGQ (Immunity Related GTPase Q) is a Protein Coding gene. Gene Ontology (GO) annotations related to this gene include GTP binding.
Molecular Mass	62.5 kDa
AA Sequence	<p>MPPPQGDVTALFLGPPGLGKSALIAALCDKDVETLEAPEGRPD SGVPSLRAAGPGL FLGELSCPPAAPGPWAAEANVLVLVLPGPEGNGEPLAPALGEAALAALARGTPLLAV RNL R PGDSQTAAQARDQTAALLNSAGLGAADLFVLPANCGSSDGCEELERLRAALQ SQAEALRRLPPAQDGFVVLGAAELEAVREAFETGGLEAALSWVRSGLERLGSARL DLAVAGKADVGLVVDMLLGLDPGDPGAAPASVPTAPTFFPAPERPNVVLWTVPLGH TGTATTA AAA SHPTHYDALILVTPGAPTEKDWAQVQALLLPDAPLVCVRTDGE GEDP ECLGEGK MENPKGESLKNAGGGGLENALS KGREKCSAGSQKAGSGEGPGKAGSE GLQQVVMKKSGGGDSERAAALSPEDETWEVLEEAPPPVFPLRPGGLPGLCEWLR RALPPAQAGALLLALPPASPSAARTKAAALRAGAWRPALLASLAAAAAPLPGLGWA CDVALLRGQLAEWRRGLGLEPTALARRERALGLASGELAARAHFPGPVTRAEVEAR LGAWAGEGTAGGAALGALSFLWPAGGAAATGGLGYRAAHGVLLQALDEMRAEAE</p>

 Tel: 1-631-559-9269 1-516-512-3133

 Email: info@creative-biomart.com  Fax: 1-631-938-8127

 45-1 Ramsey Road, Shirley, NY 11967, USA

AVLAPPEPAQTRTRPLEQKLISEEDLAANDILDYKDDDDKV

Purity > 80% as determined by SDS-PAGE and Coomassie blue staining

Stability Stable for 3 months from receipt of products under proper storage and handling conditions.

Storage Store at -80 centigrade. Avoid repeated freeze-thaw cycles.

Concentration 50 µg/mL as determined by BCA

Storage Buffer 100 mM glycine, 25 mM Tris-HCl, pH 7.3.

GENE INFORMATION

Gene Name [IRGQ immunity related GTPase Q \[Homo sapiens \(human\) \]](#)

Official Symbol [IRGQ](#)

Synonyms IRGQ; immunity-related GTPase family, Q; immunity related GTPase family, Q1, IRGQ1; immunity-related GTPase family Q protein; FKSG27; immunity-related GTPase family, Q1; IRGQ1; FLJ12521; FLJ38849; FLJ42796; FLJ46713;

Gene ID [126298](#)

mRNA Refseq [NM_001007561](#)

Protein Refseq [NP_001007562](#)

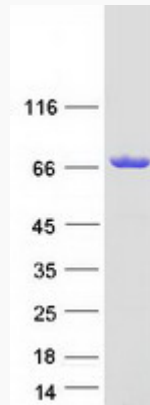
UniProt ID [Q8WZA9](#)

 Tel: 1-631-559-9269 1-516-512-3133

 Email: info@creative-biomart.com  Fax: 1-631-938-8127

 45-1 Ramsey Road, Shirley, NY 11967, USA

SDS-PAGE



 Tel: 1-631-559-9269 1-516-512-3133

 Email: info@creative-biomart.com  Fax: 1-631-938-8127

 45-1 Ramsey Road, Shirley, NY 11967, USA