

## Recombinant Human IRS1 Protein, His Tagged

Cat. No. IRS1-06H Lot. No. (See product label)

### SPECIFICATION

<b>Product Overview</b>	Recombinant human IRS1 (600-1242) was expressed by baculovirus in Sf9 insect cells using an C-terminal His tag.
<b>Species</b>	Human
<b>Source</b>	Insect Cells
<b>ProteinLength</b>	600-1242 aa
<b>Description</b>	This gene encodes a protein which is phosphorylated by insulin receptor tyrosine kinase. Mutations in this gene are associated with type II diabetes and susceptibility to insulin resistance.
<b>Form</b>	Recombinant protein stored in 50mM sodium phosphate, pH 7.0, 300mM NaCl, 400mM imidazole, 1mM DTT, 10% glycerol.
<b>Molecular Mass</b>	68 kDa
<b>Purity</b>	>80%
<b>Storage</b>	Store product at -70 centigrade. For optimal storage, aliquot target into smaller quantities after centrifugation and store at recommended temperature. For most favorable performance, avoid repeated handling and multiple freeze/thaw cycles. 1yr at -70 centigrade from date of shipment.

 Tel: 1-631-559-9269 1-516-512-3133

 Email: [info@creative-biomart.com](mailto:info@creative-biomart.com)  Fax: 1-631-938-8127

 45-1 Ramsey Road, Shirley, NY 11967, USA



**Concentration** >0.05 µg/µL

**Shipping** Dry Ice

## GENE INFORMATION

**Gene Name** IRS1 insulin receptor substrate 1 [ Homo sapiens (human) ]

**Official Symbol** IRS1

**Synonyms** IRS1; insulin receptor substrate 1; HIRS-1

**Gene ID** 3667

**mRNA Refseq** NM\_005544

**Protein Refseq** NP\_005535

**MIM** 147545

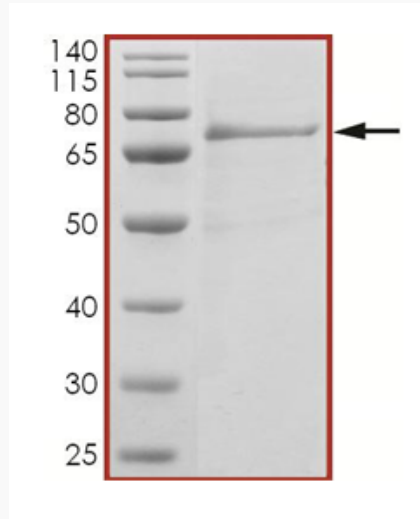
**UniProt ID** P35568

 Tel: 1-631-559-9269 1-516-512-3133

 Email: [info@creative-biomart.com](mailto:info@creative-biomart.com)  Fax: 1-631-938-8127

 45-1 Ramsey Road, Shirley, NY 11967, USA

**SDS-PAGE**



The purity of IRS1 (C-Term) was determined to be >80% by densitometry.

Calculated MW: ~68 kDa Observed MW: ~70 kDa

 Tel: 1-631-559-9269 1-516-512-3133

 Email: [info@creative-biomart.com](mailto:info@creative-biomart.com)  Fax: 1-631-938-8127

 45-1 Ramsey Road, Shirley, NY 11967, USA