

Recombinant Human IRS1 Protein, His-tagged

Cat. No. IRS1-2338H Lot. No. (See product label)

SPECIFICATION

Product Overview	Recombinant Human IRS1 Protein (Asp12-Phe264) with a N-His tag was expressed in E. coli.
Species	Human
Source	E.coli
ProteinLength	Asp12-Phe264
Description	This gene encodes a protein which is phosphorylated by insulin receptor tyrosine kinase. Mutations in this gene are associated with type II diabetes and susceptibility to insulin resistance.
Form	Freeze-dried powder
Molecular Mass	Predicted Molecular Mass: 31.6 kDa Accurate Molecular Mass: 32 kDa
Endotoxin	<1.0 EU per 1g (determined by the LAL method).
Purity	> 90%
Applications	Positive Control; Immunogen; SDS-PAGE; WB.
Stability	The thermal stability is described by the loss rate. The loss rate was determined by

 Tel: 1-631-559-9269 1-516-512-3133

 Email: info@creative-biomart.com  Fax: 1-631-938-8127

 45-1 Ramsey Road, Shirley, NY 11967, USA

accelerated thermal degradation test, that is, incubate the protein at 37 centigrade for 48h, and no obvious degradation and precipitation were observed. The loss rate is less than 5% within the expiration date under appropriate storage condition.

Storage

Avoid repeated freeze/thaw cycles. Store at 2-8 centigrade for one month. Aliquot and store at -80 centigrade for 12 months.

Storage Buffer

PBS, pH7.4, containing 0.01% SKL, 1mM DTT, 5% Trehalose and Proclin300.

Reconstitution

Reconstitute in 20mM Tris, 150mM NaCl (pH8.0) to a concentration of 0.1-1.0 mg/mL. Do not vortex.

GENE INFORMATION

Gene Name

IRS1 insulin receptor substrate 1 [Homo sapiens (human)]

Official Symbol

IRS1

Synonyms

IRS1; insulin receptor substrate 1; HIRS 1; IRS-1; HIRS-1;

Gene ID

3667

mRNA Refseq

NM_005544

Protein Refseq

NP_005535

MIM

147545

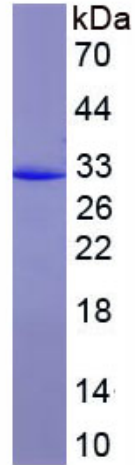
UniProt ID

P35568

 Tel: 1-631-559-9269 1-516-512-3133

 Email: info@creative-biomart.com  Fax: 1-631-938-8127

 45-1 Ramsey Road, Shirley, NY 11967, USA



Tel: 1-631-559-9269 1-516-512-3133

Email: info@creative-biomart.com Fax: 1-631-938-8127

45-1 Ramsey Road, Shirley, NY 11967, USA